

**2012 CTA Spring Meeting, April 13, 2012**  
**Business Meeting—Camp Mabry, Building 8, Austin, Texas**  
**CTA Social—Camp Mabry Picnic Grounds**

**Agenda**

**Registration—8:30 AM**

**Call to Order—9:00 AM**

**Announcements**

**Approval of Minutes, Fall 2011 Meeting**

**Officers' Reports**

President (*Mary Jo Galindo*)  
 President Elect (*Rachel Feit*)  
 Secretary (*Kristi Ulrich*)  
 Treasurer (*Carole Leezer*)  
 Newsletter Editor (*Mindy Bonine*)

**Standing Committee Reports**

Auditing (*Mark Denton*)  
 CTA Communications (*Mindy Bonine*)  
 Contractors List (*Shelly Fischbeck*)  
 Curation (*Carolyn Spock*)  
 Governmental Affairs (*Rachel Feit*)  
 Multicultural Relations (*Marie Archambault*)  
 Nominating (*Bill Martin*)  
 Public Education (*David Brown*)

**Special Committee Reports**

Academic Archeology and CRM (*Jon Lohse*)  
 Anti-looting Committee (*Jeffery Hanson*)  
 Archeological Survey Standards (*Marianne Marek*)  
 History (*Doug Boyd*)  
 Membership (*Becky Shelton*)

**Agency Reports**

Texas Historical Commission (*Pat Mercado-Allinger*)  
 Texas Parks and Wildlife (*Michael Strutt*)  
 Texas Department of Transportation (*Scott Pletka*)  
 Texas Archeological Research Laboratory (*Jonathan Jarvis*)

**Old Business**

Vote on Ceramics Protocol

**New Business**

2012 Budget  
 Student Research Grant Award  
 E. Mott David Award

**Meeting Adjourns—12:00 PM**

Lunch—12:00 to 1:30 PM

**Current Research Presentations—1:30 to 4:30 PM**

**CTA Social – 5:00 PM**

Camp Mabry Picnic Grounds (see map on p. 4)

***In this issue...***

President's Forum .....	2
Map to Camp Mabry.....	4
Officer's Reports.....	6
Committee Reports.....	7
Announcements .....	8
Minutes (Fall 2011) .....	13
Thank You Letters.....	17
TAAM Reports .....	18
Proposed 2012 Budget .....	20
Officers and Committee Chairs.....	22
Join the CTA Yahoo! Group.....	23
Membership Form.....	24

**Draft Ceramics Protocols  
 Attached to Back of Newsletter**

## ***President's Forum***

By Mary Jo Galindo

We will be returning to Camp Mabry this spring and I would like to sincerely thank Kristen Mt.Joy and the Adjutant General's Office for extending their hospitality once again. We will be in our usual auditorium, and the social in the picnic area will follow the afternoon presentations. We were absolutely spoiled by Dan Prikryl and the LCRA staff at our last spring meeting and hopefully we can return to LCRA in the future. Our fall meeting will be in conjunction with the Texas Archeological Society meeting in Tyler.

### **2011 Texas Archeology Month Reports**

Elsewhere in this issue we have a report from two of the three organizations to whom we each provided \$500 grants last year in support of Texas Archeology Month: Hueco Tanks State Park and Historic Site and Lake Jackson Historical Association. A report from the Bosque Museum was received too late for inclusion here, so it will appear in our fall newsletter. Along with the formal application process, this brief report is a requirement of our outreach grants and we value the feedback from these organizations on how our grants were applied and appreciated. I encourage the CTA membership to promote these grants in your interactions with volunteer groups and outreach associations. Applications for 2012 grants will be due by August 31 and are submitted to the President, which at the close of our upcoming meeting, will be Rachel Feit (AmaTerra). Congratulations again, Rachel, and thanks for being willing to lead!

I have appreciated the opportunity to serve as your President over the past two years. Being the CTA representative on the Antiquities Advisory Board has been an eye-opening experience and I have also learned a lot from my fellow officers, Nick Trierweiler (AmaTerra), Marie Archambeault (Texas Historical Commission), Carole Leezer (Center for Archaeological Studies), Mindy Bonine (AmaTerra; webmaster guru), and Kristi Ulrich (UTSA-Center for Archaeological Research). It quickly became apparent to me how much this organization is kept humming by its committee leaders and members who form a dependable core. Their efforts on our behalf make it all possible. If you are interested in getting more involved with the archaeological community, then

I definitely encourage you to join a committee and contribute your expertise.

### **Committee News and Prize Winners**

This spring, in addition to the committee usual reports and budget discussion, the Student Research Grant winner of the \$1,000 prize will be announced. This amount reflects an increase that the membership approved at the Spring 2011 meeting. Thanks are due committee chair Jim Hughey (HRA Gray & Pape) and member Becky Shelton (AR Consultants) for evaluating the applicants.

The Public Education committee, chaired by David O. Brown (TARL Research Fellow) will also announce the winner of the 2012 E. Mott Davis Award, which recognizes an outstanding example of work in public education.

Two committees have been reinvigorated in the last year, including the Academic Archaeology and CRM Committee, which Jon Lohse (Center for Archaeological Studies) chairs, and the Anti-Looting Committee chaired by Jeff Hanson (Four Corners Research). I look forward to the results of the recently completed looting survey.

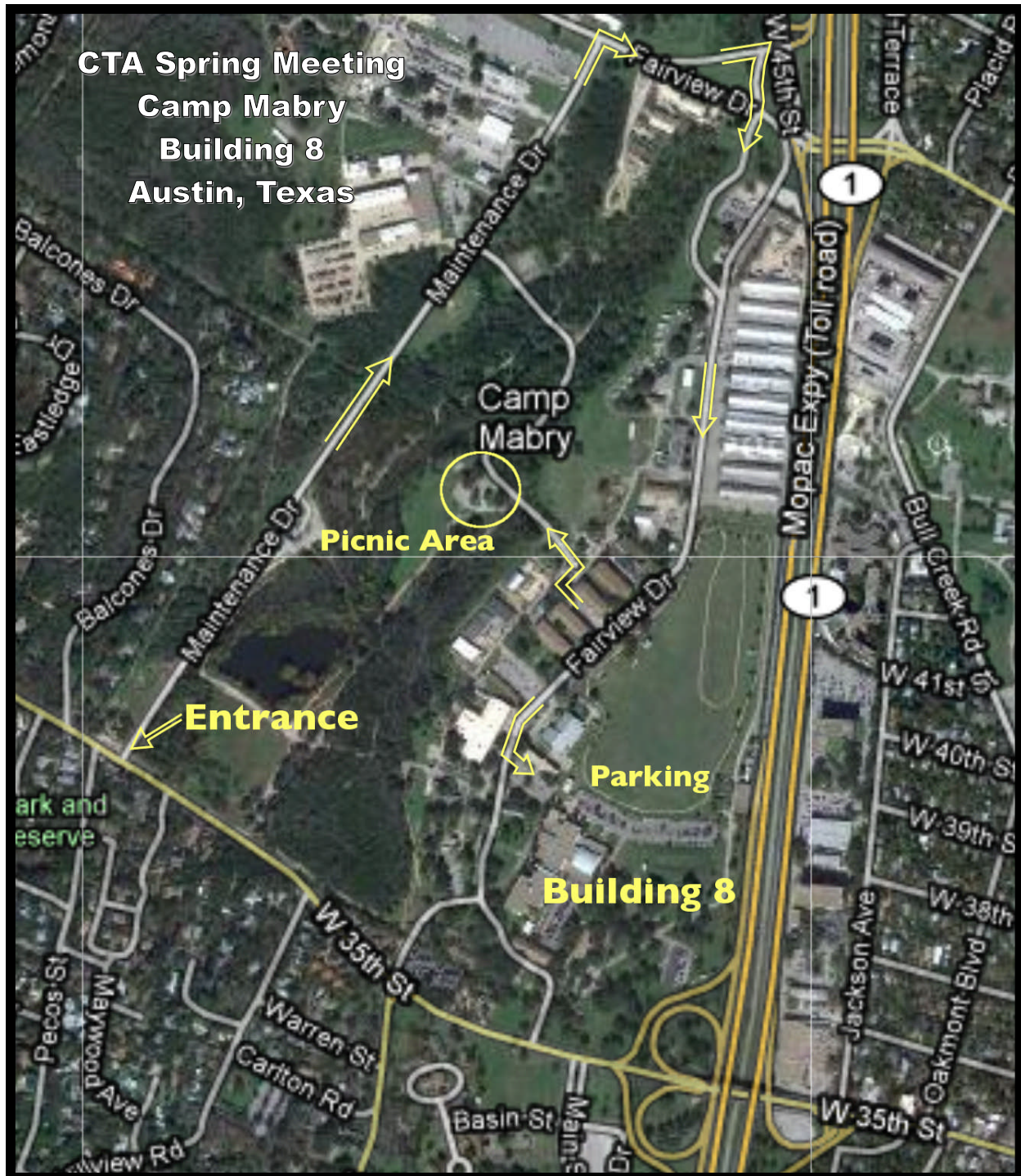
I encourage the membership-at-large to review these two committees' respective mission statements on our website. Our web presence was recently revamped, and this is an excellent opportunity for each committee chair to review and update their information. During my tenure, a series of ad-hoc committees were formed to address the development of minimum standards for data gathering and analysis for different topics and classes of artifacts, including provenience, integrity, lithics, ceramics, and features.

The Ceramic Protocol Committee, led by Linda Ellis (Adkins Global), developed a guide for the minimal ceramic research and analytical standards that are to be adhered to by archeologists working in Texas. These guidelines provide a greater degree of specificity and detail regarding how and why to conduct ceramic research in Texas, and what selected research questions warrant additional attention in different parts of

*(Continued on page 3)*

*(Continued from page 2)*

the State. It is hoped that this document will draw attention to and aid in the development of regionally specific ceramic research questions. The document is printed in this newsletter issue for a second time; therefore, we will be voting on its acceptance at the upcoming meeting. In addition to Linda Ellis, I would like to thank the members and chairs of these committees, including Jonathan Jarvis (TARL), Tom McIntosh (Archaeological Compliance Services), Jon Lohse (CAS), and Katherine Turner-Pearson (URS).



### Instructions:

Everyone who comes to the meeting at Camp Mabry must bring a **photo ID**. Tell the guard that you are attending the CTA Spring Meeting in Building 8 or that you are attending the CTA Social on the picnic grounds. Please do not park in the small parking lot at the west entrance of Building 8, but continue on to the large parking lot to the east. Anyone who is NOT a current member and plans to attend the meeting or social will need to contact Carole Leezer (cleezer@txstate.edu) to register. Lunch can be purchased on site or there are several restaurants nearby.

**Share Your Current Research with Members of the  
Archaeological Community!**

**Call for** CTA is looking for short 10-20 minute long presentations to be given at our Spring 2012 Meeting at Camp Mabry. Your presentation may be either formal or informal, with a PowerPoint presentation or without.

Looking for an occasion to test run a formal conference paper? Look no further! Want to be the envy of all your peers with your coolest project to date? Here is your chance! Come on up—we'd like to hear from everyone!

**Papers!**

The presentations will begin at 1:30 PM right after the business meeting and lunch on April 13, 2012 in Building 8 of Camp Mabry.

To submit your presentation and reserve a slot, contact the CTA President, Mary Jo Galindo, at [mgalindo@swca.com](mailto:mgalindo@swca.com).

## **Officer's Reports**

### **Secretary Report**

Kristi Miller Ulrich

Happy Spring!! Well, since that little bit of winter is now over, I just wanted to take a moment to remind you all that it's time to renew your membership with CTA. Memberships are on yearly bases from January to December, so your 2011 membership expired on December 31, 2011. Currently we have 7 student members, 58 professional members and 24 contractors who have renewed or recently joined CTA for the 2012 year. You can pay online via PayPal through the CTA website or by completing a membership renewal form (also on our website) and mailing it with a check to Council of Texas Archeologists c/o Carole Leezer, Center for Archaeological Studies, Texas State University, San Marcos, TX 78666. Please remember that professional membership (for those earning more than \$20,000 per year) is now \$30. All other membership fees and contractor listing fees remain the same. Also, please take a moment to join the CTA\_org Yahoo! Group. All notices to the CTA membership are posted to this email list and this is our main way of communicating with the CTA membership. If you are not currently on this list, please forward your current email address to Mindy Bonine at [ebony2071@yahoo.com](mailto:ebony2071@yahoo.com) and she will see that you are added to the list server.

### **Treasurer Report**

Carole Leezer

In this issue of the CTA newsletter, you will find a proposed 2012 budget. Please review and be ready to discuss and vote on the proposed budget at the Spring meeting. As of February 29, 2012, our Checking account contains \$17,365.94; the Money Market account contains \$8,896.06; and our Scholarship Fund contains \$8,553.98.

Thank you to Missi Green, Rachel Fiet, Masahiro Kamiya, and Nancy Kenmotsu for their donations to the Scholarship Fund!

Membership renewals and donations were down in 2011. Please help us continue to serve the archeological community and the public, join or renew your membership today!

### **Newsletter Editor Report**

Mindy Bonine

I would like to remind everyone again that this newsletter has an announcements section that can be used by anyone in the membership to get the word out on current activities. I do not emphasize it enough in my "Calls for Articles" on the CTA Yahoo! Group, but ANY topic that might be of interest to our membership is welcome in the announcements section of the newsletter. This includes, but is not limited to, fieldschools, conferences, workshops, symposia, website launches, etc.

## ***Committee Reports***

### **Second Posting of the Ceramics Protocol Committee Report**

Linda Ellis

In 2010, the CTA Ceramics Protocol Committee was tasked with developing a set of basic guidelines for conducting the analysis of prehistoric ceramics in Texas. A formal presentation of the Committee's findings was presented at the Fall 2010 meeting of the Council of Texas Archeologists.

The CTA Ceramics Protocol Committee recommends the adoption of the proposed guidelines outlined in the summary report presented at the back of this newsletter. We recommend that the CTA adopt this protocol as constituting the minimal ceramic research and analytical standards to be adhered to by archeologists working in Texas. These guidelines should be seen providing a greater degree of specificity and detail regarding how and why to conduct ceramic research in Texas, and what selected research questions warrant additional attention in different parts of the state. As a means of addressing the different ceramic traditions found in different parts of Texas, a supplemental document entitled "Regional Summaries of Prehistoric and Early Historic Ceramics in Texas" has been published on the CTA website. We hope that this document will draw attention to and aid in the development of regionally specific ceramic research questions. The committee welcomes all questions and comments regarding the proposed guidelines.

### **Communications Committee and Ad hoc Committee for CTA Website Update**

Mindy Bonine

I would like to announce that the new website is live. We have not had time to track down the committee chairs for content on their webpages, and we are still in the process of working out the back-end access issue. Please let me know if you have any questions.

## TEXAS HISTORICAL COMMISSION/ARCHEOLOGY DIVISION REORGANIZATION & NEWS

*by Pat Mercado-Allinger, Archeology Division Director & State Archeologist*

### AD Reorganizes

Several adjustments and cuts had to be made throughout the Texas Historical Commission's divisions and programs, effective September 1, 2011. These changes were made in response to budget cuts mandated by the Texas Legislature. For the Archeology Division (AD), the staffing reduction was significant, resulting in the loss of 6 full-time positions. To meet the challenges resulting from these reductions, AD programs and staffing were critically analyzed and reorganized. The primary goal of this reorganization was to retain important programs. The adjustment has been and continues to be a challenge, but all programs have been maintained, although at reduced levels.

Significant changes to AD staffing included the elimination of several positions and recombination of some of these into new positions. First, the division's receptionist, Texas Archeology Month coordinator/editor, 4 full-time regional archeologist positions (formerly responsible for non-regulatory duties), 3 full-time archeological reviewer positions, the project archeologist/in-house collections manager and full-time State Archeologist were eliminated. Then, the State Archeologist position was combined with that of the AD director and some of the regional and reviewer positions were combined to create 4 new archeological positions that combine regulatory duties with other program responsibilities.

We appreciate everyone's support and patience as we adjust to leaner times. Rest assured that the staff of AD is committed to excellence, but with fewer employees there will by necessity be some reductions in services. The following discussion provides an overview of the changes and cutbacks that have been instituted.

### Review & Compliance and State Archeology Program Changes

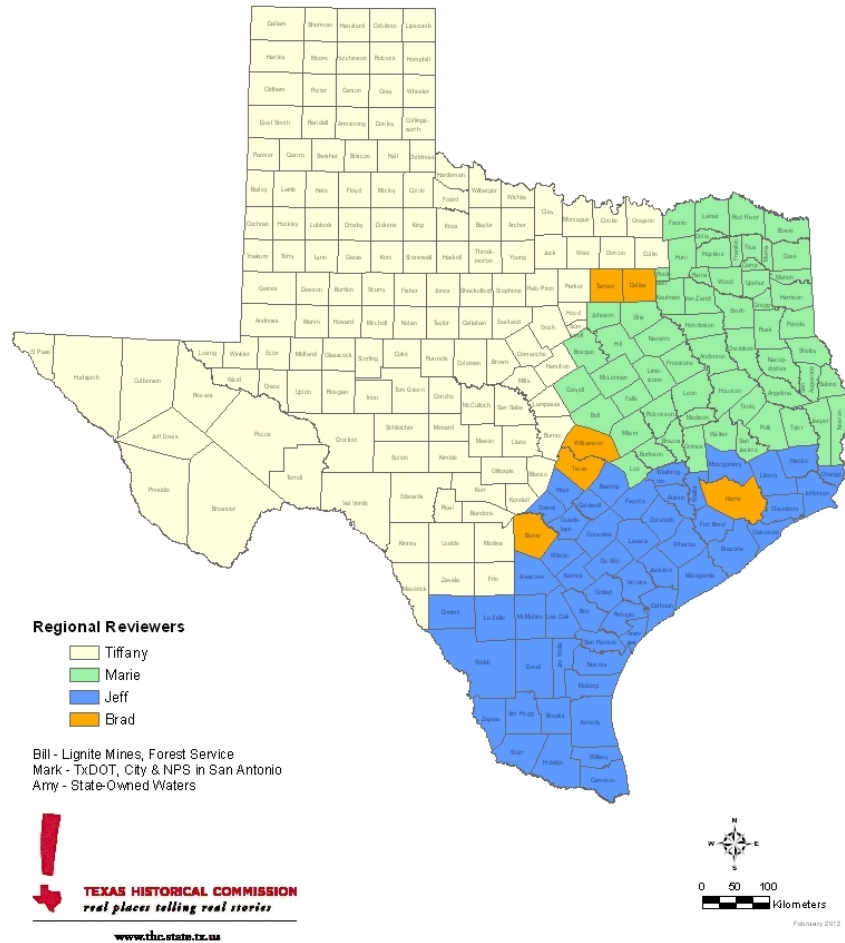
Mark Denton continues to serve as the team leader for state and federal review and compliance and handles reviews for TxDOT, the City of San Antonio and National Park Service properties in San Antonio. Bill Martin also continues to review lignite mines and U.S. Forest Service projects, and serves as assistant team leader for review and compliance. Amy Borgens continues to serve as the State Marine Archeologist, reviewing projects located in state-owned waters, including navigable rivers as well as coastal waters. The 4 terrestrial archeologist positions are assigned project reviews on a regional basis rather than by sponsoring agencies. It is important that everyone understands that these 4 terrestrial archeologists have other duties in addition to project reviews. Figure 1 shows AD's regional divisions and staff assignment for review and compliance purposes.



Figure 1.

### Archeology Division Review Regions

As stated above, review and state archeology program (non-regulatory) duties have been combined for 4 of the archeologist positions. Tiffany Osburn, Marie Archambeault and Jeff Durst have regional assignments similar to the review and compliance regions (Figure 2). Such programs as the Texas Archeological Stewardship Network (TASN), Texas Archeology Month (TAM), Historic Texas Lands Plaque, special projects and landowner outreach fit into the latter category. Brad Jones continues to function as the part-time AD collections manager and Marie handles Native American coordination for the division.



With the aforementioned loss of the TAM coordinator/AD editor, TAM 2012 plans have been altered. There will be no printed calendar of events this year. Instead, efforts will be focused on the development of an online event form for TAM event hosts to complete and submit to AD. These forms will then be used to create an online TAM calendar which be featured on the THC website (<http://www.thc.state.tx.us/>).

The TASN will continue to be an integral part of AD and we anticipate that we will be calling upon stewards for assistance more than ever. There are currently 115 members of this select group of volunteers, including 10 marine stewards who support the work of State Marine Archeologist, Amy Borgens. Membership in the TASN will be held at the current level. New steward nominations will be only considered if there are vacancies in the network.

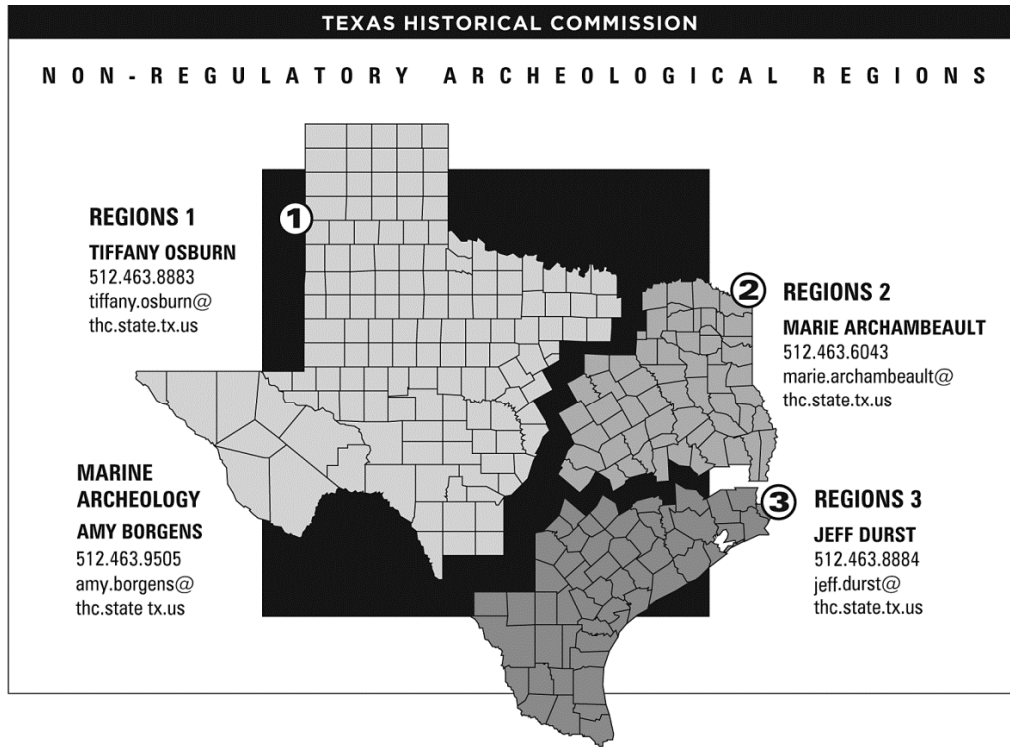


Figure 2.

Elizabeth Martindale continues to coordinate the Curatorial Facilities Certification program and assist with oversight of *La Belle* artifact collection management. She is now also providing support in the processing of final project (Section 106 and Antiquities permit) reports.

Finally, the *Current Archeology in Texas* newsletter, formerly issued twice yearly, will be on hiatus for the foreseeable future. We recognize that the newsletter was an important means of communicating important events, projects and accomplishments, but we do not currently have the capacity to continue its production. To partially fill this gap, AD archeologists will contribute articles to partner organization newsletters and share time-sensitive news items via listservs. The THC is also in the process of a major website redesign intended to enable all agency divisions to better share and update information.

**UTSA** Department of Anthropology **UTSA**  
**Summer Field Course in Archaeology**  
**ANT 3406; Crn 34393 Sec. 01S**



**Instructor:** Antonia Figueroa; Center for Archaeological Research; (210) 458-4378; [Antonia.Figueroa@utsa.edu](mailto:Antonia.Figueroa@utsa.edu)

**Description:** This will train students in archaeological field methods. Prior to the start of field excavations, 2 to 3 days will be spent in the laboratory going over principles of archaeological fieldwork and covering everything from what is known about the site, and field logistics, to tools and equipment and their maintenance. Basic artifact recognition skills also will be covered as will keys to good note taking and photography. In the field, emphasis will be placed on proper excavation techniques, understanding stratigraphy, excavating and documenting features, learning mapping skills and keeping proper field notes. The basics of laboratory processing also will be covered.

**Academic Credit:** 6-credits

**Duration:** July 12 – August 19, 2012 (Monday – Thursday 7:00AM-3:00 PM)

**Location:** South San Antonio (along the San Antonio River), San Antonio, Texas.

**Cost:** Tuition and fees are \$1,856.10 (6-credits) and \$2,156.10 (6-credits) for residents and \$3,734.10 (6-credits) and \$5,912.10 (6-credits) for non-residents.

**Conditions:** The field school will be held at 41BX1785, a Late Prehistoric Period site located in south-central Bexar County, on the east bank of the San Antonio River, 35 minutes from campus. Each participant is expected to provide their own transportation to and from the site, and their own lunch and snacks. All tools will be provided but individual toolkits area encouraged.

**Activities: Registration:** Either undergraduate (Ant 3406) or graduate (Ant 5556) credit can be earned. Registration information is available at the University of Texas at San Antonio's web site <http://colfa.utsa.edu/ant/>; or by contacting Carolyn Cochran in the Department of Anthropology at [carolyn.cochran@utsa.edu](mailto:carolyn.cochran@utsa.edu) (210) 458-4075.

## SHUMLA's Pecos Experience: Archaic Art and Archeology of the Lower Pecos, March 26-30, 2012

### SHUMLA's Field Methods in Rock Art Field School, June 5-29, 2012

#### SHUMLA's Pecos Experience: Art and Archeology of the Lower Pecos A WEEK IN WEST TEXAS

SHUMLA's research team and Dr. Jim Keyser have launched a comparative study of scratched and incised imagery evidenced in the rock art of the Lower Pecos Canyonlands and the Columbia Plateau. This year, participants in Pecos Experience have the unique opportunity to join these experts as they investigate this promising new avenue of rock art research. This is your chance to explore the canyons of the Lower Pecos, to expand your vision of the meaning and function of rock art, and to experience the excitement of making connections through discovery.

For more details, visit our Web-site <http://www.SHUMLA.org/>, contact the office at [programs@SHUMLA.org](mailto:programs@SHUMLA.org) or call (432) 292-4848.

#### SHUMLA's Field Methods in Rock Art Field School (registration deadline: May 14, 2012) A ROCK ART FIELD SCHOOL

Are you a looking for an amazing field school opportunity? Every summer SHUMLA offers its *Field Methods in Rock Art* field school course. This year, this unique experience will be held from June 5-29, 2012. Enroll to spend four intense weeks exploring desert canyons and recording world-class rock art while earning three graduate or six undergraduate college credit hours through Texas State University. You will learn:

- How to establish a field research design and data collection protocols
- Current theories regarding the meaning and function of rock art
- Rock art recording methods, laboratory procedures, and data analysis
- The archeology of the Lower Pecos, hunter-gatherer lifeways, and foraging adaptation

For more details, visit our Web-site <http://www.SHUMLA.org/>, contact the office at [programs@SHUMLA.org](mailto:programs@SHUMLA.org) or call (432) 292-4847.

## Fall 2011 Meeting Minutes

**CTA Fall 2011 Meeting  
October 28, 2011**

**Sheraton Fort Worth Hotel and Spa, Fort Worth Texas**

Registration: 8:30 AM.

Mary Jo Galindo called the meeting to order at 9:00 AM.

### Announcements:

Mary Jo Galindo announced the CTA Social will begin at 8 PM during the TAS meeting in the foyer. No additional announcements were made.

### Approval of Minutes:

The first order of business was the approval of the Spring Meeting minutes published in the Spring 2011 Newsletter. Mark Denton motioned that the minutes be approved and Marybeth Tomka seconded the motion. The motion carried.

### Officer Reports:

**President (Mary Jo Galindo):** Mary Jo Galindo introduced Rachel Feit as President-Elect. In addition to introducing the President-Elect, there was a discussion on the issue of a PI's responsibilities in asking for an extension of TAC permits. A subcommittee is working to make it clear, and Pat Mercado address this later in the meeting. In sum, it is the PI's responsibility, not firm under which contract was requested.

Mary Jo discussed the progress of the ad-hoc committee for ceramic protocols. The protocols will run in one more newsletter and voting will occur at the next meeting. Please review and submit questions and comments at the next meeting.

Out of eight entries for the outreach grants, three applicants were selected. The recipients included Hueco Tanks, Lake Jackson, and the Bosce Museum.

Mary Jo announced that later in the meeting there would be a presentation by Masahiro Kamiya.

**President Elect (Rachel Feit):** Rachel had nothing to report.

**Secretary (Kristi Miller Ulrich):** Kristi called for members to renew their memberships as well as remind everyone that the membership year for 2011 was coming to an end. Current membership numbers were announced. At the time of the meeting there were 10 student members, 150 regular members, and 53 contractors. Also, Kristi reminded that it is never too early to submit your dues for 2012. All membership applications and dues could be sent to: Carole Leezer c/o Center for Archaeological Studies, Texas State University, 601 University Drive, San Marcos, Texas 78666. She stated that you can also submit your dues via the PayPal link on our web page.

**Treasurer (Carole Leezer):** Carole reminded members that everyone could pay memberships online via PayPal. At the time of the meeting all accounts were steady.

**Newsletter Editor (Mindy Bonine):** Mindy was not available for the meeting so Mary Jo read Mindy's report. Mindy wanted to remind the members that the newsletter has an announcement section. Mindy asked that if anyone had announcements for the newsletter to please send them to her.

### Standing Committee Reports:

*Auditing (Mark Denton):* Mark had nothing to report.

*Communications (Mindy Bonine):* Mindy was not present at the meeting, so Mary Jo read her report. The new website is up. Mason Miller and Mindy have been working on it. Committee pages are relatively blank, but before she can move forward needs feedback as to who has access and who can post comments. The issue of who could post on the new website was brought up. It was proposed that user names be assigned to allow members to post, or only officers and committee chairs, or all officers. *Comments from members:* they suggest only user names or public at large. The message board would need filtering to weed out spam, which would cost \$5 per month. To police the message board, rules would be needed and a way of enforcing the rules. The Yahoo groups will remain but there is no way to link the two.

Jon Lohse brought up a few issues about the website. The content is locked on PDF newsletters. Jon asked to unlock the content to be able to use it. Marybeth Tomka asked if he had Acrobat. Carole Leezer had same problem. Jon mentions a bar that says security encryption. Mary Jo stated that she will ask Mindy to see if can remedy or what is her security on it. Mary Jo suggests access should be to officers and committees chairs. Jeff Durst agreed.

*Contractors List (Shelly Fishbeck):* Shelly stated that the list is available on the new website as a PDF. She also thanked Mindy for the new website which she said made it easier for her to do her job. Mary Jo asked for nice graphics to help make the website better.

*Curation (Carolyn Spock):* Carolyn had nothing new on curation. Carolyn will be retiring and indicated that the committee will need to find a new Chair.

*Governmental Affairs (Rachel Feit):* Rachel said that they wrapped up in summer. THC wasn't abolished, but funding was cut significantly. HP 2544 was pulled at the last minute and didn't get voted on. There is work on developing language to make it easier on archaeologists. For the next session several issues will be forefront. On the national front, one bill, House of Representatives HR 1584, appears to be of concern. The bill was introduced by the Representative from Oklahoma. If passed, the bill will exempt DOTs from doing investigations in accordance with NEPA regulations. There are frequent sites within ROWs and this would impact what we do in Texas.

As she transitions to President, she has talked to NESTA Anderson to become Chair of government affairs.

Chris Jurgens asked about Governors Direct, which sets aside state laws in dealing with the drought. The initiative exempts investigations on state property. Emergency relief projects would side-step archaeological investigations. Mark Denton and Pat Mercado stated that they had not heard.

*Multicultural Relations (Mary Jo Galindo):* The Multicultural Relations committee helps manage the TAS native American field school fund. This year \$1500 was donated to the field school. Margaret Howard indicated that there were five scholarship recipients. The Seminole Nation sent parents and children to field school. Those that benefited were a set of moth-

*(Continued on page 14)*

(Continued from page 13)

ers and their children. The program is reaching a point of acceptance, and field school was successful. She thanked CTA for their involvement because it improves our image with them. The new Multicultural Chair will be Marie Archambault who will carry on for Margaret.

*Nominating (Bill Martin):* Bill had no nominations for next year.

*Public Education (David Brown):* David was not present at the meeting so Bill Martin spoke for him. He reminded everyone to nominate public outreach programs for the E. Mott Davis Award. Not many applicants have been submitted as of yet. Bill asked to see who is on the committee for Educational Outreach and called to revitalize the committee.

### Special Committee Reports:

*Academic Archaeology and CRM (Jon Lohse):* Jon had made a committee report that is on the website. Ideas were taken from older issues of CTA newsletter. The committee is looking at the relationship between academic archaeology and CRM. They noted that it is not the same as many years ago. Jon wanted to note that Texas State University will offer a course on archaeological curation, which may grow into a certificate program. Jon asked CTA to provide approval to certain aspects of it. He pointed out that it could help graduates do their jobs better. As for continuing classes and workshops at CAS, if anyone has any ideas, please send them to Jon. Dwayne Peters (Geo-marine) commented on the encouragement of Continuing Education for the current CRM field.

*Anti Looting (Jeffery Hanson):* Jeffery was not present but had contributed to the newsletter. Due to the drought, sites will be popping up. He wants to train a team of salvage archaeologists to go to sites and assess them. Rachel Feit asked if they could plug into the stewards program. Pat Mercado agreed and said that the stewards have been reporting exposed sites.

*Archaeological Survey Standards (Marianne Marek):* Marianne was not present. It is unsure if committee is active.

*History (Doug Boyd):* Doug asked for members to go through old material to be curated at TARL.

*Membership (Becky Shelton):* Becky was not present at the meeting, and there is nothing to report.

### Agency Reports:

*THC (Pat Mercado-Aliinger):* Pat spoke about the reduction in force. THC was under threat of being eliminated. The outcome of the session was that THC survived in a smaller fashion. A total of 47 slots were lost. Archaeology division suffered a reduction of staff from 19 to 13. Four archaeological positions, editor, and support staff were terminated. In the meantime, the THC is reorganizing and working out the kinks. There is no longer a separation of regional archaeology and the review process. The THC was able to retain senior reviewers (Mark Denton and Bill Martin), and then kept several other reviewers. It was noted that that some things may take longer due to reduced staff.

THC instituted in-house training for review. They lost an editor and TAAM coordinator which will likely result in that the THC will not produce a print calendar for Texas Archaeology Awareness Month. This may be a problem because some organizations across the state rely on the booklet to promote their archaeology programs during TAAM. The newsletter will not be able to be produced as in the past also due to the loss

of the editor. THC needs to figure out how to work through this or what to do to get the information out. There will be a staff retreat to work on that issue.

THC moved people from remote archaeology labs to the downtown offices. The staff phone numbers have changed and these should be on website.

The effect of the cuts on the Agency: there will not be a THC annual conference next year. Future symposium at the TAS meeting will address issues and also look at some of their programs. Also, several THC awards are not going to be available this time around. Two major awards will still be available, the Governors Award and John El III Award. A link on the website will discuss the awards available.

Due to the cuts, the THC needs to look at ways to be more efficient. Moves are being made to retool segments of the website on review and compliance information. A new section called Project Review just went live last week (before the meeting). If there are any issues, please give some feedback on the website. It should be easier to navigate. Also, the newest version of the Atlas is now activated with new bells and whistles (satellite, topographic info, etc.).

The THC reminds firms to submit shape files when draft reports are submitted for review. Although not required at the moment, they will soon will be required with reports. Also, please submit abstracts electronically.

Some projects have come in for review that do not contain all the data available on the Atlas. Some of the problems include missing SALs, NRHP designations, and site boundaries that were not accurately depicted. Please use all the information on the Atlas during your projects. Contact the THC if you want to see the physical files.

Good news, though. THC has an arrangement with TxDOT to pull data from the THC tracking database and to get that info up on the Atlas. This will help on noting if a site is recommended for listing as an SAL or NRHP, etc. This is a long term project which may lead to further features using this process on architectural sites later. This is not just limited to TxDOT properties. Mark Denton commented that he hopes that the link will show properties that are eligible, ineligible, potentially eligible, etc. associated with site forms, and give dates to that assessment. This work will not appear on the Atlas for another 4 to 6 months.

MaryJo had a question about the Atlas; specifically, there were two tools she was wondering about including in the program: measurements and radius. She was asked to send an email to Marie to pass along to the web designer.

Ruth Matthews noted that she had used the Atlas and noted sites were not on trinomial list, but were on the map.

Antiquities Advisory Board: this topic revisits the issue brought up earlier in the meeting. The hope is that the board will provide a protocol that will act as a vehicle for contractors and PIs asking for an extensions on permits. This protocol will address second requests for extensions. Extensions are based on circumstances beyond control of the PI (project funding pulled for example). The guidelines reinforce that it is PI's responsibility to finish the project. Currently there is work on a second form where a PI can transfer permit to another PI. There may be revisions to the rules, but the committee is looking into these issues.

(Continued on page 15)

(Continued from page 14)

The THC website is going to be redesigned. Currently the THC is moving forward with that, as they were able to get funding. Divisions can update their own sections.

THC Diversity Internship: the deadline is the end of January. THC is looking for young people thinking in terms of careers in history, public history, archaeology. Please alert potential candidates of the internship. The internship will provide 8 weeks of paid work and \$5,000.

*State Marine Archaeologist (Amy Burgdon):* Amy had nothing to new to report. Amy did add that the bulk of the marine surveys are not on the Atlas. There have been at least 213 surveys, but only a few are on the Atlas. She is working on getting that info available online. If contractors are doing projects with a marine component, please email Amy.

*TPWD (Michael Strutt):* TPWD took a hit during last legislative session. The agency lost 200 plus positions and had to lose two areas: Kerrville and Lubbock. In addition to the staff positions, the agency also lost several hundred thousand dollars in project funding.

Heat and drought affected income at the state parks and natural areas. Revenues are down which has affected the budget for next year. The fires have damaged much of Possum Kingdom and Bastrop State Parks. In-house firefighters were not able to stop the flames, but did try to prevent it from spreading to the most significant parts (i.e. Indian lodge at Davis Mountains). Currently, TPWD is conducting emergency surveys, which have been easier because the brush is gone. Surveys are being done in front of emergency logging activities. Biologists are looking for pine cones to reestablish the tree community. Chris Lintz is assisting private land owners prior to doing wildlife enhancement.

Michael noted that the TAS fieldschool at Devils River during the summer is a TPWD project. The fieldschool is going to divide the area into several survey areas as well as document rock art and excavate certain areas.

*TxDOT (Scott Pletka):* John Arn filled in for Scott.

TxDOT Contracting is going to finalize a four year plan. The department is going to clear projects a year in advance. Also, TxDOT needs to finish a backlog of projects. The number of projects to be evaluated should be higher than in past years. More work will be funneled through survey contracts. These projects will include impact evaluations and reconnaissances that will evaluate risk and prioritize investigations.

TxDOT should be issuing RFPs for survey contracts early next year. These will not expire until February 2013. There may be fewer indefinite deliverable contracts in 2013. A four year work plan to improve planning efforts hopes to give better tools in their own planning. Archaeology is not high on the priority list. TxDOT didn't take too many hits during the legislative session, but TxDOT was already short employees.

TxDOT may rely on more project specific contracts. This will offer more opportunities for smaller firms to work on TxDOT projects. Ask Scott for further details.

Program level initiatives: John discussed the updates to the THC Atlas. TxDOT is working with the THC on this project. TxDOT is providing site evaluations. This data will be used by TxDOT to help other initiatives. Liability maps will be produced by TxDOT as a part of the project.

Continuing education is something that TxDOT is looking into. They are looking to refresh or introduce current methods and theories for its employees. TxDOT is also looking at advances in methods and techniques. TxDOT is trying to get one to two courses in each year. Nothing has been developed in detail, and no go-ahead, but seems likely they will get something together.

TxDOT is working on improving and refining interaction with consulting parties. They are maintaining a web page to consult on projects. TxDOT needs to address what groups are interested in consulting on TxDOT projects. Please send a letter to TxDOT to request to be a consulting party.

Mark Denton noted that TxDOT and THC are in a long process of readdressing the memorandum of agreement of their relationship with each other. It should not affect the relationship contract companies have with TxDOT. Mostly there will be changes in streamlining the process of review. All in-house investigations TxDOT does will all be done under individual permits.

*TARL (Jonathan Jarvis):* TARL is restructuring due to retirements and budget cuts. Things are moving slowly, and at this point they don't know ultimate outcome. There will be some noticeable changes. Trinomial number awarding is being handed off. Jonathan is going to work on regional projects.

For energy projects (pipelines, etc.) there will differences in handling the large volume of sites. Jonathan asked firms to give TARL a heads up before you get too far along. If TARL knows, there are methods that can save some work on both ends. TARL will still accept TexSite 2.0, but encouraging to move to TexSite 3. The new form has some benefits. He noted that in transition from 2.0 over to 3.0 you will need three things: patience, write a data transformation, and manipulate in Excel. But he did note that 2.0 and 3.0 can co-exist on your hard drive.

#### **Old Business:**

*AdHoc for CTA Webpage (Mindy Bonine):* Mindy was not present at the meeting. The webpage was addressed under Communications.

*Ad-Hoc for Ceramic Protocols (Linda Ellis):* Linda was not present, but Mary Jo spoke on her behalf. The Ceramic protocol will be published in the Fall and Spring newsletters. Voting will occur at the Spring meeting.

The meeting was paused for a presentation by Masahiro Kamiya at 10:56 AM.

#### **Ad-Hoc Protocol Committee Chairs**

*Jonathan Jarvis:* Inactivated the committee until THC gets settled (retirements and restructuring).

*Integrity and Context:* The Chair is vacant. Mary Jo planned to get in contact with the committee.

*Katherine Turner-Pearson:* She is not at US Corp. anymore, and needs to contact the rest of the committee. Not getting responses from people she has contacted.

*Lithics Committee:* Nothing has happened since report was produced. Jon Lohse is resigning as Chair. Mary Jo will contact the committee for further directions.

(Continued on page 16)

*(Continued from page 15)*

**New Business:**

The Spring Meeting will happen in Austin, although at the close of this meeting the time and location had not been decided on yet.

Public Outreach Grant Program was covered in in the President's report. There was a good response for the program. Information was funneled to all the groups putting on TAAM events. This appears to have been a good method of getting the word out.

Tiffany Osborne thanked groups that sponsored trays for the CTA Social. Prewitt And Associates, William Self Associates, DBA Macrobotanical Analysis, AR Consultants Inc. all donated trays.

CTA is looking for a liaison for meeting logistics for TAS and CTA meetings.

John Lohse suggested a Dating Protocol Ad-Hoc Committee. He is willing to Chair the committee. Rachel suggested adding it to the Continuing Education. Jon said both could be benefi-

cial as a protocol would provide guidelines and continuing education could provide tools of implementing the protocol. Continuing Education would not hit all issues alone.

A point was brought up about the 1996 committee to pull together a Fort Bliss Chronology. It seems that they needed to finish pulling together chronology and work on correcting what they have. Tim Perttula added to the discussion about how data is unsystematic. He brought up the fact that the CTA has bad record of completing these projects. He suggested getting rid of all of ad-hoc protocols committees.

Mark Denton brought up that if you are doing survey level investigation and do not follow the state survey standards, explain that in the report. Lay it out completely, so when reports are compared the THC can see why decisions were made. When you make recommendations for preservation or avoidance, put these recommendations in the cover letter to the sponsor so that they understand the recommendations and how they will preserve or avoid.

There was a motion to adjourn the meeting. The motion was seconded and the motion carried. Mary Jo Galindo officially adjourned the meeting at 11:35 AM.



Mary Jo Galindo

September 26, 2011

CAS – Texas State University

601 University Drive

San Marcos, Texas 78666

Dear Mary Jo,

I have sent a thank you note to your web site but also want to write and personally thank you for the grant money. Money is a little tight these days and without your grant we would not have been able to purchase a tipi for the museum. The \$500 was enough to almost cover the cost of the tipi. The poles cost so much to ship that we are now out hunting poles in our area, just like the Indians did when they were here.

Along with the Horn Shelter exhibit we have a great number of Indian artifacts and are in the process of completion of a Lithic Learning Center. The tipi will be a wonderful addition to what we already have here at the Bosque Museum and also affords us a great opportunity to collaborate with the Boy Scouts.

Sincerely



LaVerne Dutton

Bosque Museum

T H A N K Y O U L E T T E R S

**Texas Archeology Awareness Month Reports**

**17<sup>th</sup> Annual Interpretive Fair Weekend, Hueco Tanks State Park and Historic Site**

Hueco Tanks State Park & Historic Site held the 17<sup>th</sup> Annual Interpretive Fair Weekend on October 15 and 16, 2011. Over 1,000 people attended the fair, which promotes awareness of archeology, cultural history and stewardship at Hueco Tanks and in Texas as a whole.

Visitors were treated to Native American dancing by the Great American Indian Dancers and the Mescalero Apache Prevention Program Youth Dancers, and performances by Folklorico Cuahtli and Matachines: Danza de San Juan Diego.



Activities and presentations included an atl-atl throwing booth hosted by the Mescalero Apache Tribal Historic Preservation Office, a presentation by Irma Escontrias-Sanchez on the Escontrias family legacy, and a flintknapping and archeology demonstration presented by Dr. David Carmichael and the University of Texas at El Paso Anthropology Club.



There was also a Saturday evening program with storytelling and skits hosted by Boy Scout Troop 137.



Volunteers and staff led birding, pictograph, hiking, and rare plant tours. There were 18 tours led by 11 volunteers and one staff member, with about 200 tour participants total. Families also explored informational booths about area parks, the environment, local history, desert wildlife, and native plants.

In addition to volunteer tour guides, nine more volunteers helped welcome visitors, gave orientation briefings, prepared food for volunteers and staff, went on foot patrols, and controlled traffic. Hueco Tanks also had the help of staff from Franklin Mountains State Park.

Hueco Tanks park staff would like to thank the Council of Texas Archeologists for their generous grant, the Texas Wildlife Association Foundation for their partnership, and our many volunteers for making this event possible.

The Interpretive Fair Weekend is a family-oriented event held annually on the third weekend in October, during Texas Archeology Month. The fair is free to the public.



T  
A  
A  
M  
R  
E  
P  
O  
R  
T  
S

### Plantation Days at Lake Jackson

On October 1, 2011 the Lake Jackson Historical Association hosted **Plantation Days** at the Abner Jackson Plantation site, a state archeological landmark, in Lake Jackson, Texas. The daylong event was attended by over 300 people who visited with civil war re-enactors, participated in mock archeological digs, and created archeology inspired crafts.



Re-enactors were stationed at eight previously excavated structures where they recounted life on the sugar plantation, as well as shared their knowledge of the discoveries made at each site during the 1994-95 digs. Children and adults participated in mock archeological digs where they discovered replica Native American treasures, plantation era artifacts, and even dinosaur bones. After digging through the dirt, visitors were encouraged to make their own archeology inspired crafts, such as a Native American drum and log cabin replica similar to the one the Jackson family once inhabited on the site.

Admission was free to all visitors. The program was made possible thanks to the generous support of the Council of Texas Archeologists through their Public Outreach Grant.



T  
A  
A  
M  
R  
E  
P  
O  
R  
T  
S

## Proposed 2012 Budget

### Council of Texas Archeologists

#### 2010-2011 Budget and Expenses and Proposed 2012 Budget

(Budgets follow calendar year)

	2010 Budget	2010 Income/ Expenses	2011 Budget	2011 In- come/ Ex- penses	Proposed 2012 Budget
<b>INCOME</b>					
Individual Memberships (128-\$30 + 18-\$15)	\$ 4,150.00	\$ 4,020.00	\$ 4,770.00	\$ 4,110.00	\$ 4,200.00
Individual Membership PayPal Fees (79-\$1.00)	\$ 75.00	\$ 77.00	\$ 75.00	\$ 79.00	\$ 80.00
Student Memberships (10-\$15 )	\$ 150.00	\$ 310.00	\$ 250.00	\$ 150.00	\$ 150.00
Student Membership PayPal Fees(4-\$1.00)	\$ 5.00	\$ 7.00	\$ 5.00	\$ 4.00	\$ 4.00
Contractor Listing Fees (60)	\$ 5,300.00	\$ 5,500.00	\$ 5,500.00	\$ 6,000.00	\$ 6,000.00
Contractor Listing PayPal Fees (26-\$4.00)	\$ 100.00	\$ 108.00	\$ 100.00	\$ 104.00	\$ 100.00
Checking Interest	\$ 5.00	\$ 1.47	\$ 2.00	\$ 1.56	\$ 1.50
Money Market Interest	\$ 20.00	\$ 8.86	\$ 10.00	\$ 4.32	\$ 4.00
Scholarship Fund Interest (\$4.08)/ Donations (\$91)	\$ 150.00	\$ 108.08	\$ 100.00	\$ 95.08	\$ 100.00
Social Donations				\$ 112.00	
Other (Late fees)		\$ 48.00		\$ 284.00	
Contractor Fall Social Food Paymt				\$ 1,361.25	
Atkins check				\$ 275.00	
<b>TOTAL INCOME</b>	<b>\$ 9,955.00</b>	<b>\$ 10,188.41</b>	<b>\$ 10,812.00</b>	<b>\$ 12,580.21</b>	<b>\$ 10,639.50</b>
<b>GENERAL EXPENDITURES</b>					
Administrative Costs (2011 expenses: return ck \$30, charge back \$12, )	\$ 200.00	\$ 220.92	\$ 200.00	\$ 42.00	\$ 100.00
Web Page Registration (bi-annual fee)	\$ 60.00	\$ -	\$ 125.00	\$ 115.50	\$ 60.00
Spring Meeting/Social Expenses	\$ 800.00	\$ 751.82	\$ 800.00	\$ 777.00	\$ 800.00
Fall TAS/CTA Social	\$ 525.00	\$ 525.00	\$ 525.00	\$ 725.00	\$ 525.00
Contractor Sponsored Catering				\$ 1,361.25	
PayPal Fees	\$ 180.00	\$ 139.68	\$ 150.00	\$ 194.00	\$ 194.00
SHA Exhibit Table		\$ 300.00			
Executive Committee Expenditures				\$ 200.00	\$ 300.00
<b>TOTAL GENERAL EXPENDITURES</b>	<b>\$ 1,765.00</b>	<b>\$ 1,937.42</b>	<b>\$ 1,800.00</b>	<b>\$ 3,414.75</b>	<b>\$ 1,979.00</b>
<b>COMMITTEE EXPENDITURES</b>					
Curation Committee	\$ 50.00	\$ -	\$ 50.00	\$ 0.00	50.00
Governmental Affairs	\$ 50.00	\$ -	\$ 100.00	\$ 43.50	100.00
Membership	\$ 200.00	\$ 200.00	\$ 200.00	\$ 0.00	100.00
Multicultural Relations	\$ 50.00	\$ 50.00	\$ 50.00	\$ 0.00	50.00
Public Education	\$ 100.00	\$ 71.03	\$ 100.00	\$ 0.00	100.00
General Committee Expenses	\$ 50.00	\$ -	\$ 50.00	\$ 0.00	50.00
<b>TOTAL COMMITTEE EXPENDITURES</b>	<b>\$ 500.00</b>	<b>\$ 321.03</b>	<b>\$ 550.00</b>	<b>\$ 43.50</b>	<b>\$ 450.00</b>

**DONATIONS**

Archeological Conservancy	\$ 500.00	\$ 500.00	\$ 500.00	\$ 500.00	\$ 500.00
CTA Scholarship Grant	\$ 750.00	\$ 750.00	\$ 750.00	\$ 750.00	\$ 1,000.00
THC Texas Archeology Month	\$ 1,000.00	\$ 1,000.00	\$ 1,000.00	\$ 1,000.00	\$ 1,000.00
TAAM Event Grants (divided among 3 applicants)	\$ 1,500.00	\$ 500.00	\$ 1,500.00	\$ 1,500.00	\$ 1,500.00
TAS Donors Fund	\$ 300.00	\$ 300.00	\$ 300.00	\$ 300.00	\$ 300.00
Texas Beyond History	\$ 2,000.00	\$ 2,000.00	\$ 2,000.00	\$ 2,000.00	\$ 2,000.00
TAS Native American Field School	\$ 1,500.00	\$ 1,500.00	\$ 1,500.00	\$ 1,500.00	\$ 1,500.00
<b>TOTAL DONATIONS</b>	<b>\$ 7,550.00</b>	<b>\$ 6,550.00</b>	<b>\$ 7,550.00</b>	<b>\$ 7,550.00</b>	<b>\$ 7,800.00</b>

<b>TOTAL EXPENDITURES</b>	<b>\$ 9,815.00</b>	<b>\$ 8,808.45</b>	<b>\$ 9,900.00</b>	<b>\$ 11,008.25</b>	<b>\$ 10,229.00</b>
---------------------------	--------------------	--------------------	--------------------	---------------------	---------------------

<b>OVERALL BALANCE</b>	<b>\$ 140.00</b>	<b>\$ 1,379.96</b>	<b>\$ 912.00</b>	<b>\$ 1,571.96</b>	<b>\$ 410.50</b>
------------------------	------------------	--------------------	------------------	--------------------	------------------

**Current Assets**

Checking Account (as of 29 Feb 12)	\$ 17,365.94
Money Market Account (as of 29 Feb 12)	\$ 8,896.06
Scholarship Endowment Fund (as of 29 Feb 12)	\$ 8,553.98
<b>TOTAL</b>	<b>\$ 34,815.98</b>

P R O P O S E D 2 0 1 2 B U D G E T

## CTA Officers and Committee Chairs

### Committees

#### Academic Archeology and CRM

Jon Lohse  
[jl45@txstate.edu](mailto:jl45@txstate.edu)

#### Anti-looting

Jeff Hanson  
[jhanson@srcrm.com](mailto:jhanson@srcrm.com)

#### Auditing \*

Mark Denton  
[Mark.Denton@thc.state.tx.us](mailto:Mark.Denton@thc.state.tx.us)

#### Communications \*

Mindy Bonine  
[ebony2071@yahoo.com](mailto:ebony2071@yahoo.com)

#### Contractor's List \*

Shelly Fischbeck  
[SLFischbeck@pbsj.com](mailto:SLFischbeck@pbsj.com)

#### Curation \*

Carolyn Spock  
[c.spock@mail.utexas.edu](mailto:c.spock@mail.utexas.edu)

#### Governmental Affairs \*

Rachel Feit  
[rfeit@ecommcorporation.com](mailto:rfeit@ecommcorporation.com)

#### History

Doug Boyd  
[dboyd@paiarch.com](mailto:dboyd@paiarch.com)

#### Membership

Becky Shelton  
[becky@bcarchaeologist.com](mailto:becky@bcarchaeologist.com)

#### Multicultural Relations \*

Marie Archambault  
[marie.archambault@thc.state.tx.us](mailto:marie.archambault@thc.state.tx.us)

#### Nominating \*

Bill Martin  
[Bill.Martin@thc.state.tx.us](mailto:Bill.Martin@thc.state.tx.us)

#### Public Education \*

David O. Brown  
[david.brown@mail.utexas.edu](mailto:david.brown@mail.utexas.edu)

#### Publications Webpage

Scott Pletka  
[spletka@dot.state.tx.us](mailto:spletka@dot.state.tx.us)

#### Survey Standards

Marianne Marek  
[mmarektx@gmail.com](mailto:mmarektx@gmail.com)

\*Indicates a Standing Committee

### Officers (Executive Committee)

#### President

Mary Jo Galindo  
[mgalindo@swca.com](mailto:mgalindo@swca.com)

#### President Elect

Rachel Feit  
[rfeit@ecommcorporation.com](mailto:rfeit@ecommcorporation.com)

#### Secretary

Kristi Miller Ulrich  
[kristi.ulrich@utsa.edu](mailto:kristi.ulrich@utsa.edu)

#### Treasurer

Carole Leezer  
[cl21@txstate.edu](mailto:cl21@txstate.edu)

#### Newsletter Editor

Mindy Bonine  
[ebony2071@yahoo.com](mailto:ebony2071@yahoo.com)

*Please send any corrections to the Newsletter Editor.*

## Join the CTA Yahoo! Group

Joining the CTA\_org Yahoo! Group is easy. Just choose one of the three ways to join outlined below.

**1.**

Search for CTA\_org in Yahoo! Groups, and request to join. The group administrator receives a message asking for approval, which they will grant if you are a CTA member. You will then receive notice that you have been approved. This method enables group members to access the webpage for CTA\_org, look at the calendar, change their settings, review old messages, etc., as well as send and receive messages. It does require a Yahoo! ID, but is the easiest way to join.

**2.**

E-mail the group administrator at [ebony2071@yahoo.com](mailto:ebony2071@yahoo.com) and ask to join. They will then send you an invitation to join the group, which side-steps the approval process and you can join automatically. This method also enables group members to access the webpage for CTA\_org, look at the calendar, change their settings, review old messages, etc., as well as send and receive messages. This method requires a Yahoo! ID, but is also a very convenient way to join.

**3.**

For those that absolutely DO NOT want to create a Yahoo! ID, there is one more way to join. This method involves the group administrator adding the person to the group manually. In this case the requestor will receive an e-mail welcoming them to the group, and provides e-mail addresses to post messages and to unsubscribe. If you choose this method, you can only post messages via the e-mail address and receive copies of messages sent to the group. You will not be able to change their settings (such as requesting a daily digest of messages), nor will you be able to access the webpage for the group. This method of joining can only be used to send and receive messages, nothing else. If this method is your choice, e-mail [ebony2071@yahoo.com](mailto:ebony2071@yahoo.com) for more details.

**Council of Texas  
Archeologists**

**2012 Membership and  
Renewal Form**

Return to:  
 Carole Leezer  
 Center for Archaeological Studies  
 Texas State University  
 601 University Drive  
 San Marcos, Texas 78666

- Address correction only (see below)
- I wish to join or renew my membership in CTA.
  
- Company/Contractor to be listed \$100.00  
*(Company listing also requires one of the following professional categories.)*
- Professional (annual income more than \$20,000 per year) 30.00
- Professional (annual income less than \$20,000 per year) 15.00
  
- Student (annual income more than \$20,000 per year) 25.00
- Student (annual income less than \$20,000 per year) 15.00
  
- Contractor listing late fee (assessed after Spring Meeting)** \$16.00
- Donation to \_\_\_\_\_ \$\_\_\_\_\_
  
- Total amount remitted to CTA** \$ \_\_\_\_\_
  
- Automatically add my email to the CTA\_org Yahoo! Groups Listserve.

Name (please print): \_\_\_\_\_

Company/Institution: \_\_\_\_\_

Address: \_\_\_\_\_

City/State/Zip: \_\_\_\_\_

Phone: \_\_\_\_\_ FAX: \_\_\_\_\_

e-mail: \_\_\_\_\_

For additional information or questions, please contact the following:

[cleezer@txstate.edu](mailto:cleezer@txstate.edu)

**Membership is based on the calendar year Jan-Dec.**



**SUMMARY REPORT OF THE CTA CERAMICS  
PROTOCOL COMMITTEE**

**October 2010**

## Introduction

**Members of the 2010 Council of Texas Archeologists Ceramics Protocol Committee include: Linda W. Ellis (Chair), Tim Perttula, Steve Tomka, Chris Lintz, Rebecca Shelton, Harry Shafer, John Arnn, Waldo Troell, Charles Frederick, and Darrell Creel**

The study of ceramic technology is complex and there are about as many methods of analyzing pottery manufacture, use, and regional distribution as there are attributes to be studied and archeologists to study them. If the goal is to gain a better understanding of the universe of prehistoric ceramics in Texas then any guidelines we implement must enable all archeologists working in Texas to address the broadest range of research problems, without making those guidelines so detailed that they are cost prohibitive and/or limit our ability to pursue new lines of research as they arise. With this in mind, the committee was tasked with the following objectives:

- (1) How do other states approach standards? How would standards be implemented?
- (2) Identify "problem(s)/deficiencies." Why are guidelines/standards needed? What should they accomplish?
- (3) Possible solutions. What resources would it take to address the solutions? Do we have the resources?

Our first step was to gather information on the standards/guidelines for archeological analyses currently in place in other states. Information gathered from eight states (i.e., Arkansas, California, Colorado, Louisiana, Kentucky, Mississippi, New Mexico, and Oklahoma) indicates that most states have "reporting standards" that discuss artifact analyses in terms of general categories, descriptive terms, and overall presentation of the results of investigations. However, all are relatively vague with regard to artifact "analyses standards," indicating that specific aspects of artifact analyses should be determined by the research objectives of the individual project. Comparing the standards/guidelines in place in other states to those currently in place in Texas indicates that our standards/guidelines represent one of the more detailed statements on analysis standards/guidelines. Even so, there was a general consensus among the committee members that there was a need to explore the expansion of current Council of Texas Archeologists (CTA) standards/guidelines to accommodate more detailed ceramic studies geared to regional and cultural research problems.

To further explore the problem(s)/deficiencies in the current guidelines and identify how best to strengthen the analytical portions, the committee members began with a review of our current state of knowledge of prehistoric Texas ceramics. Since Texas includes at least six major prehistoric pottery traditions (i.e., Northeast and East [Caddo area], Central/North Central, Southeast, Central Coastal, High Plains/Panhandle, and the West/Trans-Pecos) with overlapping spatial and temporal relationships, the committee member most familiar with the spatial and temporal aspects of a specific ceramic region/tradition provided the following:

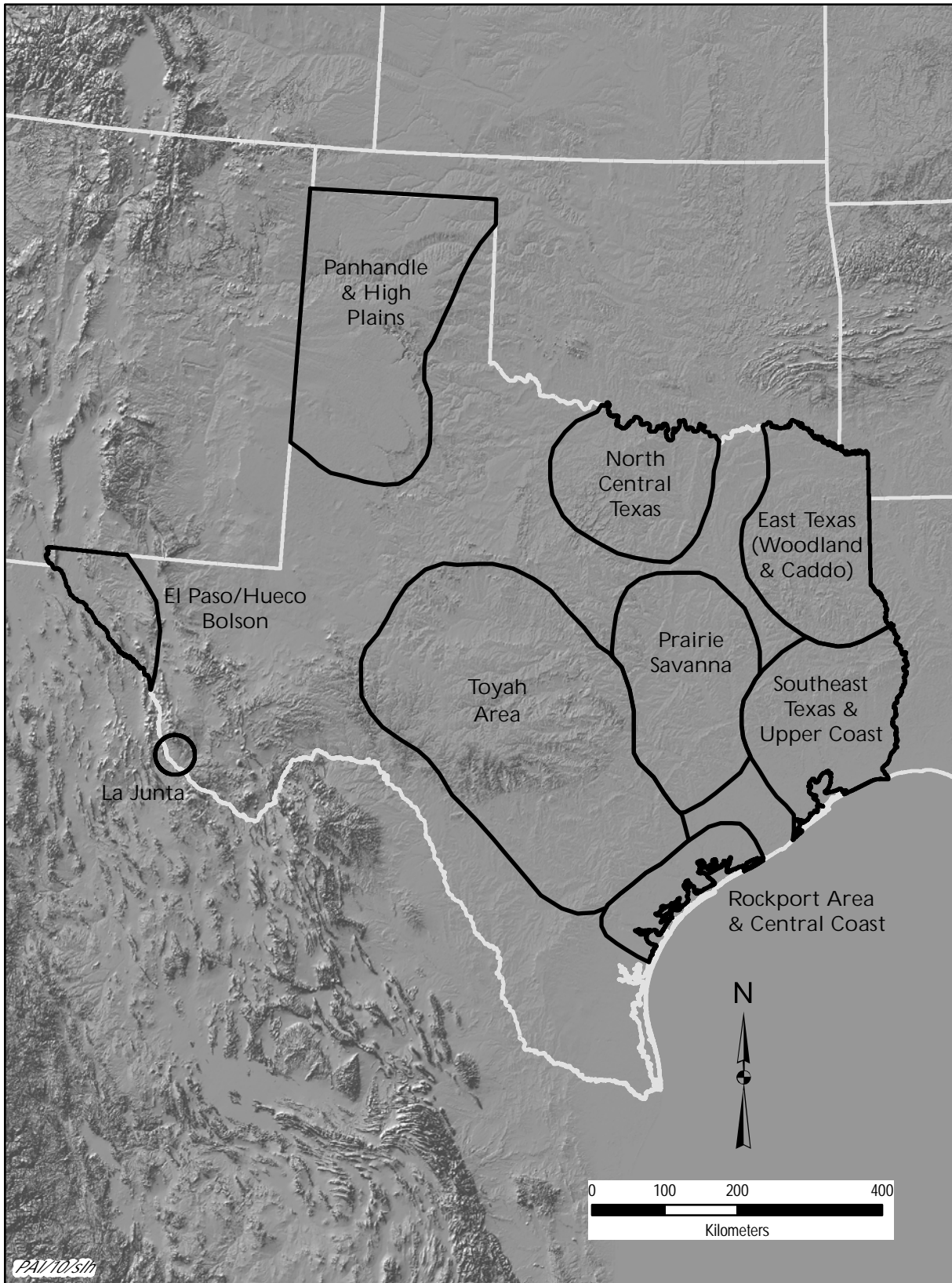
- An overview of the region and the relevant research questions for the area;
- The key ceramic attributes that would address those questions;
- How those fit with the current CTA standards/guidelines; and
- Suggestions for expanding the current CTA standards/guidelines to accommodate the key attributes from each region.

The objective was to find the commonalities in terms of regional research questions and the descriptive attributes that would address those questions, with the overall objective of developing a practical baseline standard applicable to the whole state. A summary of our results follows.

### **Spatial and Temporal Considerations**

The manufacture and use of ceramic vessels by Native American groups that lived in what is now Texas is a common and widespread feature of distinctive archeological assemblages on sites across much of Texas (Figure 1). The variety and diversity of ceramic forms, decorations, manufacturing techniques, and functions is outstanding among the native groups, ranging from the Goose Creek and Rockport pottery of the semi-nomadic hunter-gatherers of the Texas coast; the Toyah and Henrietta ceramics of the buffalo hunters and farmers of the prairie-plains and Hill Country; the Puebloan and Antelope Creek ceramics of the Panhandle farmers and bison hunters; the impressive Jornada Mogollon ceramics of the El Paso area Puebloan groups; and the well-made and finely decorated ceramics of the Caddo groups that lived in East Texas. Despite what is known about the distribution of ceramics in Texas archeological sites, the relationship between Prehistoric and Historic cultural and technological ceramic traditions has yet to be fully established across much of the state, except perhaps for the clear continuity between prehistoric and historic Caddo ceramic traditions in East Texas and between the prehistoric and early historic Karankawan groups on the central Texas coast.

The use of ceramics in what is now Texas began as early as ca. 500 B.C. in parts of East Texas and Southeast Texas, and continued until as late as the nineteenth century among a number of different Native American groups across the state (Table 1). In much of the state, the manufacture of pottery did not begin until as late as the eighth century A.D. and later. By ca. A.D. 1200-1300, ceramics were a very significant part of the material culture of aboriginal peoples—including mobile hunter-gatherers as well as sedentary farmers—in Southeast and coastal Texas, among Caddo and Jornada Mogollon groups, and among the Plains Village communities in the Texas Panhandle and the North Central Texas prairies.



**Figure 1. The distribution of areas with prehistoric and/or early historic ceramics in Texas. Figure prepared by Sandra L. Hannum.**

**Table 1. Chronological information on the adoption and use of ceramics by native groups in Texas.\***

Area	First Appearance	Period of Use
East Texas	ca. 500 B.C.	ca. 500 B.C.-AD 1830s
Southeast Texas	ca. 500 B.C.	ca. 500 B.C.-A.D. 1700
Prairie Savanna	ca. 50 B.C.	ca. 50 B.C.-late 17 <sup>th</sup> century
Trans-Pecos	ca. A.D. 200	ca. A.D. 200-1880
Panhandle and High Plains	ca. A.D. 200	ca. A.D. 200-17 <sup>th</sup> century
Rockport area and Central Coast	ca. A.D. 700	ca. A.D. 700-1700
North Central Texas	ca. A.D. 750	ca. A.D. 750-1800
Central Texas/Toyah Area	ca. A.D. 900	ca. A.D. 900-1700
La Junta area	ca. A.D. 1200/1250	ca. A.D. 1200/1250-1750+
Lower Pecos	ca. A.D. 1500	ca. A.D. 1500-1700

\*see Regional Summaries document, Ellis and Perttula 2010; chapters in Perttula 2004; Perttula et al. 1995; Shafer 2008; Suhm and Jelks 1962; Nancy Kenmotsu, October 2010 personal communication; Andy Cloud, October 2010 personal communication.

While we have a good working knowledge of the ages and durations of the various ceramic traditions in Texas, for more detailed considerations of the age of specific sites with ceramics, as well as the rapidity and tempo of ceramic assemblage changes, more refined approaches are needed to establish with precision the absolute age of Native ceramics. First, this can be done by the application of modern statistical analyses to radiocarbon dating of AMS samples from occupations with features associated with ceramics, as well as the direct dating of the ceramics themselves. Sites with 10-20 radiocarbon assays are suited for an analysis of <sup>14</sup>C dates using a Bayesian modeling approach. This methodology is now quite widely used and well accepted and permits one to speak with statistical confidence about chronological relationships and allows for important hypothesis creation and testing. Future analyses of large suites of radiocarbon dates from aboriginal sites in Texas with ceramics may want to consider Bayesian methods in calibrating radiocarbon dates from various archaeological contexts instead of using mean methods, for established refined chronological estimates of the construction of specific features as well as the probable duration of different occupations (Bronk Ramsey 2009; Levy et al. 2008; Kidder et al. 2010:131-132, 142). Secondly, the luminescence dating of ceramics has been applied with some considerable success in a variety of settings—and on different ceramic wares—in North America, but its use for more refined dating is only in its infancy in Texas. Given the abundance of ceramics of several different kinds and styles at many prehistoric and early historic sites in Texas, the luminescence dating of both plain and decorated sherds recovered in situ from these many sites should be routinely explored on both testing and data recovery projects in the region since it is a method “that dates the manufacture and use of...ceramic objects [that] provide a closer relationship between the target event [when a site is occupied] and the dated event [the age determined by the luminescence on a sherd]. Luminescence is particularly well suited for the dating of ceramics since the method measures the time elapsed since vessels were last heated, usually corresponding to manufacture or use” (Lipo et al. 2005:535).

Finally, during CTA Ceramics Protocol Committee discussions, several committee members emphasized how important it is for archeologists to be consistent in using concepts derived from geography, ecology, and archeology when referring to the spatial distribution and extent of material culture (in this case, ceramics) as seen in the archeological record. First, material culture as documented in the archeological record may not be the same as that seen and documented in ethnographic cultures; second, the distribution of material culture—as defined by archeologists—may not be identical to the distribution of specific peoples, or necessarily can be equated with a specific group of peoples; and third, defining the landscape inhabited by prehistoric groups may always be difficult to achieve, and archeologists are complicating it by interchangeably referring to areas, regions, etc. as if they were equivalent (see Arnn 2010; Ellis and Perttula 2010). Clarity is needed in the use of regionally-specific archeological, geographical, and ecological terms.

### **Research Issues**

The consideration of relevant research issues is an important part of the development of current perspectives of the study of aboriginal ceramics in Texas. Typically research questions focused on ceramic analysis are driven by research designs or may be extracted from regional overviews, where such exist, that summarize the state of scientific knowledge about a specific topic and/or region (i.e., Mercado-Allinger et al. 1996; Kenmotsu and Perttula 1993).

During recent meetings by the members of the CTA ceramics protocol committee, five major ceramic regions/traditions have been identified in Texas: (1) Woodland and Caddo in East Texas; (2) Gulf Coast; (3) North Texas/Prairie Savanna/Central Texas; (4) Panhandle/Plains; and the (5) Trans-Pecos. We recognize that each region has region-specific research issues that address phenomena that are unique to its cultural-historical context and/or its prevailing hunter-gatherer and agricultural adaptations. The individual documents that summarize the regional trends in ceramic adoption, changes in ceramic types and traditions through time, intra-regional variation in ceramic assemblages, and relationships with neighboring traditions as seen through the identification of non-local ceramic vessels and sherds, should be consulted for details related to unique research questions when working within the particular region (see Ellis and Perttula 2010; Shafer 2010). Similarly, when working with ceramic assemblages dating to or extending into the Colonial period, the document summarizing selected research issues related to Colonial period ceramics should be consulted (Tomka 2010). These documents are provided as both relatively comprehensive for some regions as well as brief summaries of what is known about ceramic technology in another specific region or a particular time period. The research issues presented in the regional summaries are not intended to stifle creativity nor limit research directions. They are simply intended as starting points and minimal guidance regarding what is known or what is not known about ceramic manufacture and use.

While, as noted above, each region has some research issues that are specific to it, overall the following research questions or research orientations are common to all regardless of region and/or temporal concern:

- I. The adoption of ceramics and their use has been discussed in terms of three broad patterns: (a) the earliest dates of adoption; (b) the evolution of ceramic

styles during the prehistoric times; and (c) the effects of colonial period forces on aboriginal ceramic technology.

II. Defining chronological position/affiliation and temporal relationships between wares/styles. Defining the chronological sequence of ceramic types is not unlike the use of projectile points as index markers, and has the potential to create fine-tuned chronologies. It is often the very first step in beginning meaningful research in an area and goes hand-in-hand with typical culture historical undertakings (common to all regional summaries).

III. Determining typological assignments through the use of technological attributes such as basic surface treatments and decorative elements. The definition of ceramic types or wares is critical since the types are the constructs of the culture-historical frameworks and are often equated with specific groups of people (e.g., Leon Plain = Toyah People). Nonetheless, due to factors such as the degradation of surface treatments, difficulties in identifying certain attributes (e.g., variation in ceramic color due to washes, slips, clay colors derived from firing) categorizing sherds, particularly small ones, into typological groups is not fool-proof (see Panhandle/Plains summary by Lintz [2010]). Nevertheless, typological assignments should be attempted utilizing the most current ceramic type (and variety) classifications

IV. As well as issues dealing with chronology and cultural-historical relationships, the study of prehistoric ceramic assemblages provides valuable information about Native American cultural adaptations. To address a broader range of research objectives, ceramic analyses must be comprehensive enough to capture the array of stylistic and technological diversity found on any one group of ceramics. This means expanding our analyses to include ceramic technological variables that more effectively address these broader objectives.

V. Identifying pottery manufacture, distribution, and regional interaction spheres. The study of pottery traditions is one of the more fruitful avenues through which to study regional interaction among prehistoric and historic groups. Whether it is through the movement of highly decorated wares or the identification and tracking of clay sources represented in pottery (i.e., instrumental neutron activation analysis and petrographic analysis), the movement of vessels offers tangible evidence of regional interaction between groups (common to all regional summaries).

VI. Technology of manufacture and use. The study of technological traditions focuses on the study of ceramic manufacture (i.e., non-decorative production steps of ceramic vessels). It is at the core of defining manufacturing processes shared by communities of peoples, and in some respects it is a more reliable indicator of technological traditions (as well as cultural identity) than observable ceramic decorative motifs. The study of ceramic use focuses on what happens to ceramics during their use-life. It is an integral aspect of ceramic analysis in that these analyses provide a comprehensive view of how ceramics function within a given community or society.

VII. Exploring the role of ceramic production and use in hunter-gatherer land-use and subsistence. While ceramic manufacture and use is nearly ubiquitous among horticulturalist and agriculturalist groups across the world, much research has been conducted recently to understand why some hunter-gatherer groups adopted the use of pottery despite their highly mobile land-use systems. One of the most interesting avenues of research is the relationship between the adoption of ceramic technology and intensification of food production that would be allowed by a more efficient means for extracting nutrients once they are already captured, collected, or harvested. The reoccurrence of ceramics within riverine settings or on the coastal plains may be related to this phenomenon (see East Texas Woodland and Caddo overview by Perttula [2010] and the Coastal Ceramic overview by Ellis [2010]).

VIII. Linking prehistoric pottery traditions to historic social groups. In Texas we have few instances where a particular prehistoric pottery tradition has been linked to an ethnohistorically documented group (i.e., the Karankawa, the Caddo, and the Wichita in historic times). The relationship of a number of other named types such as Leon Plain and Goliad Ware to prehistoric antecedents is not known or only tenuous, yet the ability to make such linkages has significant implications for understanding social group patterns and affiliations at different times and places (see the Central Texas overview by Arnn et al. [2010] and the Colonial Period discussion by Tomka [2010]).

Beyond these generalized research topics, a number of specific themes also have been highlighted in the individual regional summaries. In general, the greater the accumulated knowledge about aboriginal ceramic manufacture and use for a particular region or theme, the more varied the research issues that can and should be developed on specific projects. While it is the case that chronological concerns are the initial building blocks of research, the lack of chronological control does not have to always limit research on ceramic technology across the board.

### **Ceramic Methods and Attributes**

In the broadest sense, research questions pertaining to prehistoric ceramics should be relevant to the specific region or regions where the ceramics were found, as should the specific ceramic attributes needed to answer those questions. This is the case no matter which classificatory system one chooses to use by virtue of the fact that any ceramic classification scheme (or typology) is simply a construct useful for organizing our data into categories based on some perceived similarity that reflects relevant aspects of particular research topics (e.g., Dunnell 1971). Thus, several potential groupings could exist within any one ceramic data set. Since no one classification scheme can effectively address all research questions, this committee does not propose the use of any one specific ceramic typology over another because each classification scheme or typology must be appropriate for the research topics under investigation. Nor do we attempt to outline and categorize in detail the full range of ceramic attributes that may be relevant to all prehistoric ceramic research problems in Texas. We do, however, recognize the deficiencies in many of the ceramic analyses that appear in reports done in recent years. Thus, it was the consensus of the committee that some enhancement of the current CTA guidelines regarding the analysis of prehistoric ceramics was needed. Our challenge was to find a way to expand the current



guidelines without making them so detailed that they would be cost prohibitive and/or limit our ability to pursue new lines of research as they arise.

With that in mind, each member of the committee reviewed the various regional summaries/overviews (Ellis and Perttula 2010) with an eye toward finding the commonalities in ceramic research questions, analytical methods and techniques, and the use of specific ceramic attributes. Assessing the commonalities between the regions led us to a baseline suite of ceramic attributes that are common to all regional ceramic research, and would therefore be applicable statewide. Therefore, this committee proposes that all analyses of prehistoric ceramic sherd assemblages conducted in Texas should include, but certainly not be limited to, five basic ceramic attribute categories. (Since whole vessels are rarely found in Texas sites with ceramics, except perhaps in the East Texas Caddo area and in the El Paso area, they are not the primary focus of this discussion.) The analytical weight of those attributes will vary from region to region because analytical variation is a product of the existence of regionally distinct ceramic manufacturing traditions, as well as the use and distribution of wares specific to those regions.

Each sherd in an analyzed sample from an archeological site should include recorded observations on five basic ceramic attributes:

- Paste Morphology— This should include aspects of: (a) Paste Constituency—the type of non-plastic inclusions (e.g., sand, bone, grog) and the predominant size range of non-plastic inclusions (e.g., medium-sized sand grains, large crushed bone fragments), and (b) Paste Texture—the general morphology and configuration of the crystalline components, amorphous material, and voids as observed in cross-section (e.g., smooth, laminated, contorted). To facilitate these observations, it is suggested that a fresh break along the edge of each sherd be microscopically examined.
- Exterior and interior surface treatment—Aspects of surface finishing regardless of decorative treatment (i.e., dry-smoothing, floating, and burnishing) should be recorded for each sherd in the analyzed sample.
- Exterior and interior decorative treatment—Embellishment beyond surface treatment that adds to the detail of the overall surface and can involve additions to (or over) the existing surface finish (e.g., slips, glazes, washes, appliqués), displacement of the existing surface (e.g., incising, stamping, punctating), or some combination of both. As with surface treatment, the presence of one technique does not necessarily preclude the presence of another (e.g., Rice 1987).
- Vessel form – For whole vessels, this would include data such as orifice and base diameter and estimated volume. In the absence of whole vessels, the general aspects of vessel form can be assessed through attributes such as thickness, diameter, and gross morphological category (i.e., body, base, and rim). Additional attributes should be recorded for each rim in the assemblage, including: rim profile, rim form, lip profile, and lip decoration.
- Firing Attributes – Firing atmosphere can be discerned from the variability in color and oxidation patterns. Although many variables affect color (e.g., clay composition and the temperature and duration of the firing atmosphere), color generally provides an indication of whether or not pottery was fired in an oxidizing (lighter colors such

as those in the tan, orange, light brown to red range) or nonoxidizing (dark colors such as dark brown, gray or black) environment (see Rice 1987).

#### Additional Considerations:

We think it is important that all the sherds in a recovered ceramic assemblage be analyzed to a basic analytical level of detail. More specific and detailed analyses of ceramic assemblages are predicated on the research problems being posed, and the appropriate sample sizes of sherds needed to address the research problems, with one caveat: regardless of the level of investigation, assemblages of less than 200 sherds should be examined in detail to ensure that the technological and stylistic data obtained is as analytically robust as possible, and that the maximum information is obtained from smaller assemblages (which often characterize certain regions and ceramic traditions in Texas).

In larger assemblages (>200 sherds), it is incumbent upon the ceramic researcher to state, and justify, the quantitative scale of analysis that will be employed when conducting detailed sherd analysis. Some larger assemblages may warrant 100 percent detailed analysis, while others will rely on a detailed analysis of a sample of sherds. The goal in either case is to obtain sufficient information from an assemblage to characterize its stylistic and technological diversity and insure that a representative sample of plain and decorated rim and body sherds, rim will be subjected to analysis.

When appropriate to the research problem, we also encourage the use of special analyses. Because many paste attributes and exterior and interior surface treatments are ambiguous when observed macroscopically, we urge the systematic performance of petrographic analyses on ceramic assemblages. Similarly, we encourage project archeologists to systematically collect comparative samples of local clays available near recorded sites. Other physicochemical studies such as instrumental neutron activation analysis (INAA) and residue analysis will contribute valuable information on the intra- and inter-site spatial patterning of ceramics, as well as their use. Such samples will be critical in the study of ceramic manufacture, as well as the distribution of ceramic wares and people across the landscape.

Finally, the ceramic analysis included in the final report should contain a discussion of the ceramic research and analytical approach and methods employed in the study, as well as a summary presentation of the ceramic findings. We also recommend illustrations and/or photographs (preferably color) of rim sherds, decorated sherds, and whole vessels in the ceramic analysis section of the final report.

### **Recommendations of the CTA Ceramics Protocol Committee**

The Council of Texas Archeologists (CTA) Ceramics Protocol Committee recommends the adoption of the proposed guidelines outlined above concerning the need to ground ceramic analysis of Native ceramic sherds, vessels, and assemblages in Texas in: (a) regionally relevant research issues/research problems, and (b) by employing a consistent set of attributes and analytical methods. Our recommendations are not viewed as a replacement of the existing CTA's Guidelines for Professional Performance Standards. Instead, these proposed guidelines for ceramic analysis are to be seen as a necessary

augmentation of the now current data analysis guidelines, primarily by providing a greater degree of specificity and analytical detail concerning the development of selected research questions that warrant attention by ceramic analysts in different parts of the state, as well as steps that should be followed in the conduct of ceramic research.

For instance, we concur with the CTA Guidelines that address Pre-analysis Considerations (Section 5.1.1.2) that the analysis of native ceramics should be performed by individuals with a demonstrated competence in ceramic analysis and a familiarity with regional ceramic archeological data. In addition, we recommend that analytical competency be defined as adherence to the CTA Analysis Guidelines (Section 5.2) as amended by the protocol proposed by this committee. Furthermore, we propose that as the agency responsible for the review of both state and federal projects and undertakings that involve the analysis of ceramic data as part of completing Antiquities Code of Texas and National Historic Preservation Act projects, the Archeology Division at the Texas Historical Commission (THC) ensure that ceramic analysts employed by Cultural Resource Management (CRM) firms meet the CTA guidelines for professional performance standards.

We recognize that following the recommendations of the CTA Ceramics Protocol Committee may have financial implications by potentially increasing the costs of certain CRM projects within an already highly competitive market. To ensure that all projects that yield Native ceramic assemblages will therefore adhere to the guidelines put forth in this document, we recommend that the CTA adopt this protocol as constituting the minimal ceramic research and analytical standards required by the CTA Guidelines for Professional Performance Standards that should be adhered to by CRM firms working in Texas. More importantly, as the State's oversight agency, we recommend that the THC serve as the arbiter of compliance by CTA members to these guidelines. In addition, and in the spirit of analytical consistency, we also recommend that the THC require that all State agencies with their own archeological staff be held to the same research and analytical standards as members of the CTA.

History has shown that research questions and analytical methods change over time as information accumulates and as new theoretical paradigms arise over time. Therefore, we view this document and the supporting regional and topical summaries as constantly evolving through accumulated knowledge and changes in research perspectives and priorities. As a result, we recommend that the CTA support the periodic update of this and other adopted research protocols. We also recommend that this effort should include nominal financial support from the CTA to ensure that these updates can be regularly completed.

Finally, the CTA Ceramics Protocol Committee strongly urges greater communication between archeologists across the state to raise the level of shared knowledge as well as the quality of archeological research that is being performed. To this effect, we recommend that institutions be identified that will house and make available in the public domain the results (data bases) of specialized analysis performed on archeological materials, including the specialized analyses of Native ceramics. At a minimum, information derived from INAA, and petrographic analysis (including image libraries of petrographic thin sections) should be maintained, periodically updated, and made available to researchers across the state. The creation, maintenance, and update of such databases and image libraries

containing the results of these specialized ceramic analyses should be supported by the CTA and the THC.

### References Cited

Arnn, J. W.

2010 Contextualizing Time and Space of Late Prehistoric Texas. In Regional Summaries of Prehistoric and Early Historic Ceramics in Texas for the Council of Texas Archeologists, assembled and edited by L. W. Ellis and T. K. Perttula. CTA Ceramics Protocol Committee, Austin.

Arnn, J. W., B. Shelton, and L. W. Ellis

2010 Ceramics of the North Central Texas, the Prairie Savanna, and Central Texas Archeological Regions. In Regional Summaries of Prehistoric and Early Historic Ceramics in Texas for the Council of Texas Archeologists, assembled and edited by L. W. Ellis and T. K. Perttula. CTA Ceramics Protocol Committee, Austin.

Bronk Ramsey, C.

2009 Bayesian Analysis of Radiocarbon Dates. *Radiocarbon* 51:337-360.

Dunnell, R. C.

1971 *Systematics in Prehistory*. The Free Press, New York.

Ellis, L. W.

2010 Prehistoric Ceramics of the Gulf Coast. In Regional Summaries of Prehistoric and Early Historic Ceramics in Texas for the Council of Texas Archeologists, assembled and edited by L. W. Ellis and T. K. Perttula. CTA Ceramics Protocol Committee, Austin.

Ellis, L. W. and T. K. Perttula (assemblers and editors)

2010 Regional Summaries of Prehistoric and Early Historic Ceramics in Texas for the Council of Texas Archeologists. CTA Ceramics Protocol Committee, Austin.

Kenmotsu, N. A. and T. K. Perttula (editors)

1993 Archeology in the Eastern Planning Region, Texas: A Planning Document. Cultural Resource Management Report 3. Department of Antiquities Protection, Texas Historical Commission, Austin.

Kidder, T. R., L. Roe, and T. M. Schilling

2010 Early Woodland Settlement and Mound Building in the Upper Tensas Basin, Northeast Louisiana. *Southeastern Archaeology* 29(1):121-145.

Levy, T. E., T. Higham, C. Bronk Ramsey, N. G. Smith, E. Ben-Yosef, M. Robinson, S. Munger, K. Knabb, J. P. Schulze, M. Najjar, and L. Tauxe

2008 High-precision radiocarbon dating and historical biblical archaeology in southern Jordan. *Proceedings of the National Academy of Sciences* 105(43):16460-16465.

**Lintz, C.**

2010 Panhandle/Plains Woodland Ceramic Traditions. In Regional Summaries of Prehistoric and Early Historic Ceramics in Texas for the Council of Texas Archeologists, assembled and edited by L. W. Ellis and T. K. Perttula. CTA Ceramics Protocol Committee, Austin.

**Lipo, C. P., J. K. Feathers, and R. C. Dunnell**

2005 Temporal Data Requirements, Luminescence Dates, and the Resolution of Chronological Structure of Late Prehistoric Deposits in the Central Mississippi Valley. *American Antiquity* 70(3):527-544.

Mercado-Allinger, P. A., N. A. Kenmotsu, and T. K. Perttula (editors)

1996 Archeology in the Central and Southern Planning Region, Texas: A Planning Document. Office of the State Archeologist Special Report 35 and Cultural Resource Management Report 7, Department of Antiquities Protection, Texas Historical Commission, Austin.

Perttula, T. K.

2010 Woodland and Caddo Ceramic Traditions in East Texas. In Regional Summaries of Prehistoric and Early Historic Ceramics in Texas for the Council of Texas Archeologists, assembled and edited by L. W. Ellis and T. K. Perttula. CTA Ceramics Protocol Committee, Austin.

Perttula, T. K. (editor)

2004 The Prehistory of Texas. Texas A&M University Press, College Station.

Perttula, T. K., M. R. Miller, R. A. Ricklis, D. J. Prikryl, and C. Lintz

1995 Prehistoric and Historic Aboriginal Ceramics in Texas. *Bulletin of the Texas Archeological Society* 66:175-235.

Rice, P. M.

1987 Pottery Analysis: A Sourcebook. University of Chicago Press, Chicago.

Shafer, H. J.

2008 Texas Archeology Academy Ceramic Workshop: Origins of Texas Ceramics. Texas Archeological Society, San Antonio.

2010 Guide to Ceramic Studies in the Trans-Pecos Region, Texas. In Regional Summaries of Prehistoric and Early Historic Ceramics in Texas for the Council of Texas Archeologists, assembled and edited by L. W. Ellis and T. K. Perttula. CTA Ceramics Protocol Committee, Austin.

Suhm, D. A. and E. B. Jelks (editors)

1962 Handbook of Texas Archeology: Type Descriptions. Texas Archeological Society Special Publication 1 and Texas Memorial Museum Bulletin 4, The University of Texas at Austin.

Tomka, S. A. with contributions by T. K. Perttula and T. Middlebrook

2010 Research Issues Concerning Colonial Period Ceramics in Texas. In Regional Summaries of Prehistoric and Early Historic Ceramics in Texas for the Council of Texas Archeologists, assembled and edited by L. W. Ellis and T. K. Perttula. CTA Ceramics Protocol Committee, Austin.