



2003 CTA Spring Meeting
 April 4, 2003 — Business Meeting, Camp Mabry: Building 8
 Social 6:00 PM — Camp Mabry Picnic Grounds
 April 5, 2003 — Travis Building Room 1-100
 Research Papers

Spring Meeting Agenda

Registration 9:00 AM
 Call to Order 9:30 AM

Announcements

Approval of Minutes from Fall 2001 Meeting
 (as published in the last CTA Newsletter)

Officers' Reports

- President
- Immediate Past President
- Secretary-Treasurer
- Newsletter Editor

Standing Committee Reports

- Governmental Affairs
- Contractors List
- Public Education
- Multicultural Relations
- CTA Webpage
- Membership
- Special Committee Reports
- Accreditation and Review Council
- Archeological Survey Standards
- Anti-Looting Committee
- Guidelines Revision
- Old Business
- 41VT98 Update
- Rock Art Database Project – Recording Form

New Business

- Election of President Elect
- Elections and committee appointments
- Amending Article VI.1 of the CTA Bylaws
- Discussion of 3-D Policy
- Discussion of HB 929, Unmarked Burials Bill
- Business Meeting Adjourns 12:30 PM

Afternoon Program – Historic Archeology Forum
 1:30 PM

Meeting Adjourns 4:30 PM

Social

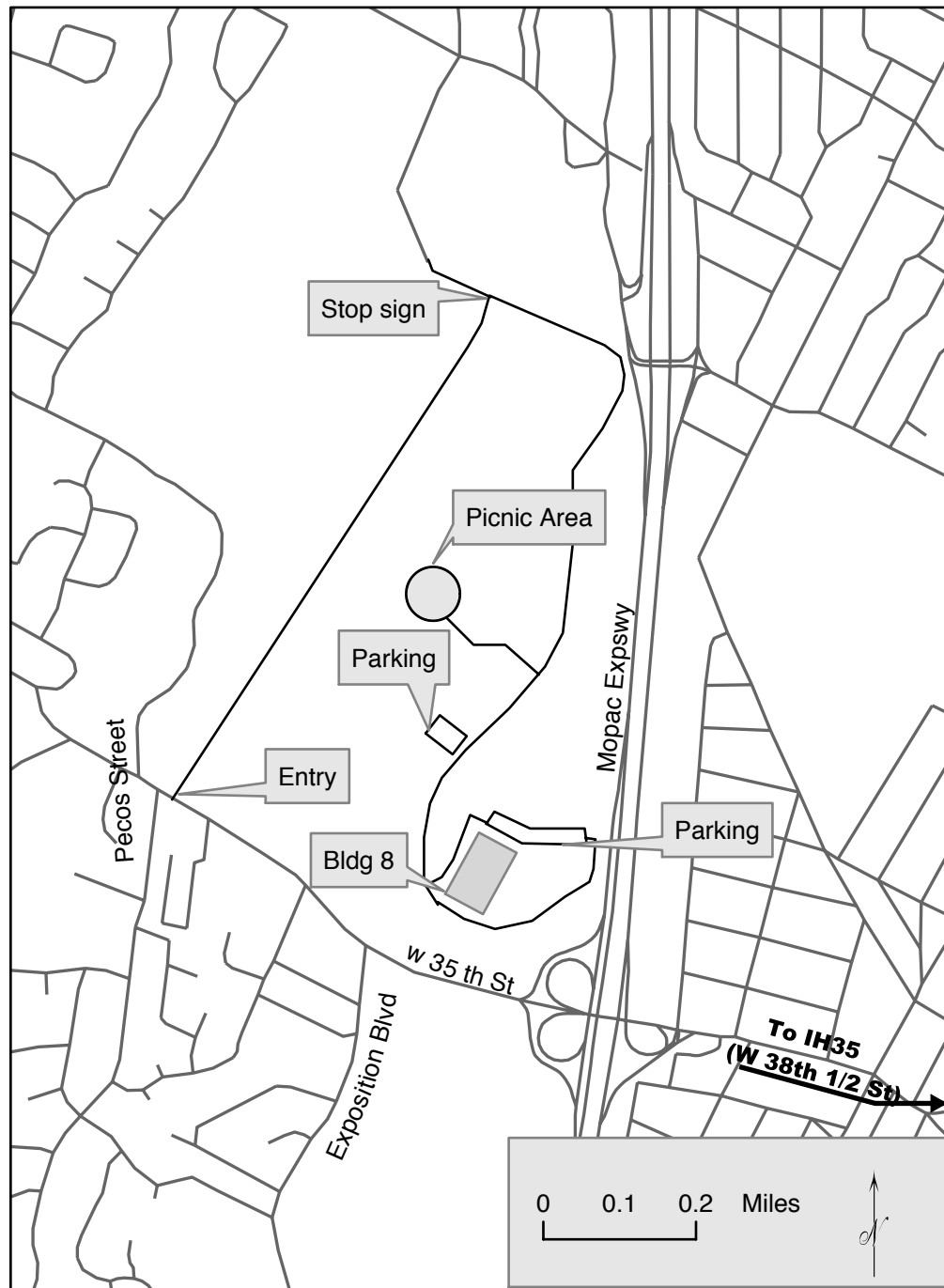
5:30 PM – Camp Mabry Picnic Grounds

Saturday April 5 — Research Conference

Travis Building
 Doors open 9:30
 Paper Presentations
 10:00 AM - 4:00 PM

In this issue . . .	
Presidents' Forum	4
Officer's Reports	5
Committee Reports:	
Governmental Affairs	7
Public Education.....	7
Membership	8
Articles and Updates	8
Survey Standards.....	9
Who's Wastin Time: A Response	9
Rock Art Form.....	11
TX Arch Academy Teaches.....	11
Graham / Applegate Site	12
Student Research Grant Report	17
Announcements	23
List of Committees	27

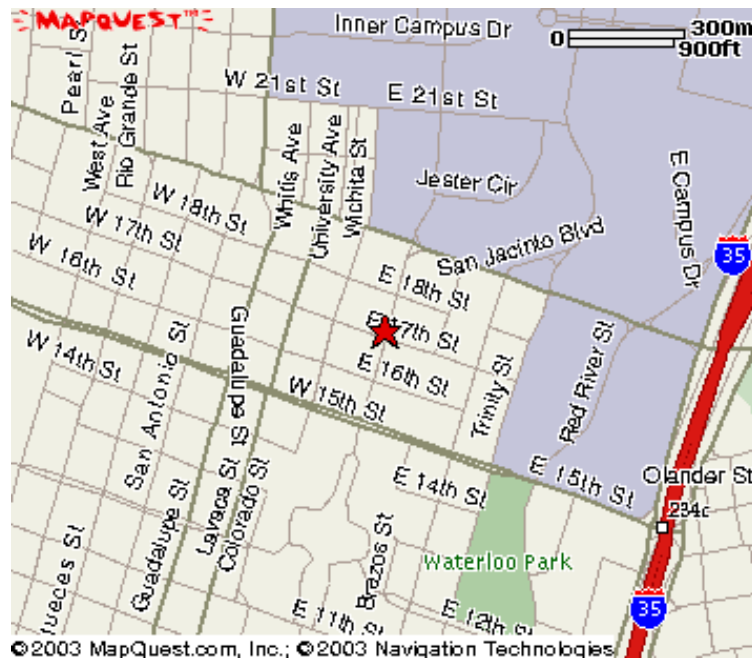
2003 CTA Spring Meeting
April 4, 2003 — Business Meeting, Camp Mabry: Building 8
Social 6:00 PM — Camp Mabry Picnic Grounds



Important!

Be sure to have a **picture ID** with you or you will not be allowed entrance to the grounds. Entry will be facilitated if you e-mail your DL# to Shellie Sullo at shellie.sullo@tx.ngb.army.mil by April 1. Do NOT park in the small lot in front of Building, those spaces are reserved for General Officers.

April 5, 2003 — Travis Building Room 1-100 — Research Papers



CTA - CALL FOR PAPERS

CTA Research Conference Saturday, April 5th

At the Fall 2002 CTA Meeting in Laredo the members endorsed the idea of holding a one-day research conference in conjunction with the Spring, 2003 Meeting. It will be held on Saturday, April 5th, at the Stephen F. Austin Building in downtown Austin. Anyone interested in Texas archeology may attend free of charge.

Abstracts for papers will be accepted on any topic that presents the meaningful results of archeological research in Texas by CTA members. Papers will be limited to 20 minutes. There will be no symposia, formal discussants, or concurrent sessions.

Presenters are encouraged to focus on what you have learned as the result of your research, rather than on your methodology, provenience accounting, management recommendations or other tedious detail. Providing succinct contextual/background information is a key ingredient in any effective presentation. Since we hope to have students and non-specialists among the audience, please eschew jargon in favor of ordinary English.

Only current CTA members may present papers; if necessary, you can join or renew your membership at the business meeting on Friday. Student papers are encouraged.

If you would like to present a paper, please send the information listed below to Research Conference Coordinator, Steve Black, vial email sblack@mail.utexas.edu by **March 21st**. Note that a maximum of 18 paper slots are available; first come, first serve. Please embed the required information within the email message, rather than attach it as a separate file.

Name
Affiliation
Paper Title
Abstract (200 words or less)

A meaningful subject line will prevent your message from being trashed unread. You should receive an acknowledgement within a few days; if not, please send Steve a helpful reminder. If all goes well, the abstracts and paper schedule will be posted on the CTA website in advance of the conference.

Presidents' Forum

Clell L. Bond

The times they are a-changing. Our planning for the fall CTA meeting is going to require some new considerations, which we will discuss at our meeting on April 4. As most of you know our fall meeting is held in conjunction with the annual Texas Archeological Society (TAS) meeting. Historically, this has been a two-day event with various business and committee meetings on Friday, over indulgence by some on Friday night, and papers presented on Saturday. In the past the CTA has held the fall business meeting on Friday. TAS is moving forward with a stronger emphasis on the dissemination of archeology information to the members. To accomplish this the new TAS meeting format will have papers presented on Friday afternoon as well as Saturday. This change means we will need to reschedule our fall meeting to the morning hours.

Boring! In a word that seems to be what most cultural resource management reports are. I was recently asked to recommend some Texas archeological reports that might be of interest for high school students. That turned out to be a harder assignment than I initially thought. It seems, with a few fortunate exceptions, that most of our publications fall into two categories, flashy pamphlets with no substance or lengthy tomes that describe in incredible minutiae the attributes of a million or so flint flakes or burned rocks. Who reads these things besides the THC and a few die-hards who believe that the analysis of flakes is the key to the universe and the understanding of human culture?

Of course when it comes to reports we have seen the enemy and "...they are us." We write most of these things as a regulatory issue. As a review agency the THC has a job to do, they manage the resources. To do this they need proof that we went where we said we were, did what they required and provided proof of what we found. As archeologists we are also very object oriented — for some reason we think that all artifacts are important and neat and that our colleagues and the public must also think the same way.

Therefore it is necessary to describe everything ever found to the level of subatomic particles. We use a jargon that defies every spell checker that Microsoft® has. Whatever happened to a discussion of the people and cultures that made or used these artifacts and what was the importance, if any, of these materials to them?

I would like to think we could do better. Of course it may require us to be more speculative in our interpretations and surely more evocative. The current buzzwords are public outreach and public involvement. If that's what we need, and I think we do, we're not going to get there with the same boring list of attributes that we are now publishing and calling research reports. I suspect any improvement will require at least three things. The first and most important is the willingness of archeologists to focus their interpretations beyond the balancing of a spreadsheet of artifact traits. Then there is the willingness and encouragement of other archeologists to let them do so, and finally the reviewing agencies need to rethink their position and reporting requirements.

Two issues of importance to CTA members were discussed and voted on at the most recent Antiquities Advisory Board (AAB). The first was a significant test of the 3D (Discard, Disposal and Destructive Analysis) policy, in which TxDOT had a lot of debitage from a Uvalde County site that they did not want to curate in its entirety for both fiscal and scientific reasons. The dichotomy and concerns between the committee members, especially the differences between the archeologists and architects, were especially interesting. Basically, the architectural interests saw little or very limited value in the debitage collection and were prepared to curate the whole thing in the dumpster. In the end a compromise was reached and 35 percent of the collection will be curated. The chair of the committee abstained from the vote. A second AAB issue involved the potential censure of a firm and Principal Investigator for conducting work without an Antiquities Permit. In the end the firm was not censured as the PI had moved on, however the case is not yet closed and action may still be pending against the PI. Both of these issues will be further addressed at our meeting.

One thing is clear, if you're planning to work on state lands make absolutely sure you have an antiquity permit before you start. Hopefully one thing that won't be boring will be our spring meeting. Well, we do have to have a business meeting on Friday morning, but that aside I think your interest will be held. Friday afternoon we'll have several papers on historic archeology and research (no flint flakes here) followed by a social with eats and drinks. On Saturday Steve Black will marshal the forces and we will have "research papers." See you there!



Officer's Reports

David O. Brown

PAST-PRESIDENT

It's been a relatively quiet few months in the past president's chair. Since the last newsletter, I attended a TAS retreat here in Austin where we discussed changes in next fall's meeting, the new TAS Academy, and general future plans for the organization. As always, we support a greater degree of integration between the CTA and the TAS. This kind of joint planning can only help both organizations and we appreciate the opportunity to have a voice in the process. The TAS is actively looking to expand its role in recruiting and public education and we applaud the effort. The TAS Academy is one such effort and we encourage CTA members to get involved and help where possible since this planned education effort could clearly benefit from strong support from the professional community.

And on another note, the Buckeye Knoll Site is back in the news. After a brief detour over the ACHP letter this fall, the US Army Corps of Engineers submitted a revised Treatment Plan for 41VT98. As discussed in the previous newsletter, an earlier version of the plan, not so much a technical document as a publicly

oriented synopsis of the proposed research, was severely criticized by the ACHP. The revised document, which presents the technical details on the research plan developed by Bob Ricklis and his colleagues at the Corps' request, was welcomed by the ACHP. In a letter dated 17 January, Carol Gleichman of the ACHP wrote:

We find this technical proposal to be well organized and to provide the needed justification for analyses proposed, both destructive and non-destructive. The importance of the site, the Early Archaic cemetery, and the artifacts associated with Early Archaic burials are clearly explained, as is the unique opportunity is provides for research on this period of time in both Texas and North America.

The ACHP agreed with the Corps' suggestion to limit destructive analysis, using unidentifiable bone fragments and teeth where possible, and employing a phased approach to the analysis which would assess the efficacy of the techniques on the 41VT98 population before running the entirety of the samples. The ACHP also noted that the SHPO and the consulting parties, the CTA as well as the TAS and the SAA, have all called for an increase in the number of samples submitted for analysis and suggested that the Corps revisit this question further with the appropriate agencies.

In response to this, the Corps and its archaeological contractor met with the THC and the ACHP on 11 February. It was suggested that the Corps consult an independent statistician regarding the issue of sample size. The Corps with Ricklis and his colleagues are now preparing a revised and hopefully final plan that will take into account the comments on the previous version. This revised Treatment Plan should be ready this spring and, as with previous versions, will have a 30 day comment period. We assume that the CTA and other consulting parties will have a chance to comment on this version. All in all, most of the parties involved now seem to feel that progress in being made and that the worst case scenario, reinterment of the remains without further analysis, is highly unlikely at this point. Even though the final details of the analysis are still to be decided, it would appear

that a substantial analytical phase is now likely. We will nonetheless continue to monitor the process closely and report on developments as they occur.



Missi Green

SECRETARY-TREASURER REPORT

Dues are still being accepted for 2003. To date half of the contractors (of the 40 from last year's list) have renewed for the year, but only 42 members (out of a listed 156 from last year) have renewed so far. PayPal is an easy way to pay your dues through the internet. You can go through the CTA page to pay, or simply go to www.paypal.com and send money directly to treasurer@c-tx-arch.org. Or send your membership dues to: Missi Green c/o Geo-Marine, Inc. at 550 E. 15th Street, Plano, Texas 75206. Please pay your dues and continue to be a voice in the policies, developments, and excitement of conducting archeology in Texas.



Andy Malof

NEWSLETTER EDITOR REPORT

"This, the second of three scheduled newsletters for the year, has proved an interesting exercise."

Looking back at the last newsletter, this was how I started the Editor's Report. Seems fitting for this issue as well, seeing as it's the second newsletter of the year (no matter how I twist it I can't come up for an excuse of calling 27(1) the second newsletter), plus, its still an

interesting exercise. In this case, rather than lacking an agenda for the next meeting, it's the minutes from the last meeting that are missing. Additionally, its only been about two months or so since the last issue, which is not a lot of time for committees to conduct new business. Therefore, there is not much to report.

This, however, allows different aspects of the newsletter to be accentuated. Again, one of the stated goals of the CTA is to forge closer relationships with avocational archeologists, especially through the Texas Archeological Society. This newsletter has several examples of successful interactions between avocational and professional archaeologists working together to further Texas archeology.

The CTA also encourages student involvement, and although I still struggle with the basic contradiction of student vs. avocational, this issue signals significant advances in the inclusion of both. The Spring meeting also is an opportunity for further interactions, especially during the symposium on historic archeology arranged by Clell Bond, and the Saturday session of research papers arranged by Steve Black. Oh, and some sort of Friday evening Social.

By continuing such outreach efforts the CTA can hopefully grow and maintain viability as a shaping force in Texas archeology. Ideally, the newsletter is a means of promoting that growth and cohesion. For the newsletter to be success-ful, however, it requires input; it is only as valuable as the information it contains. So once again, thanks to all of those that submitted material. It is those contributions that make the newsletter something worth reading. So, once more, for those that have pet theories or projects sitting next to the pet rocks, consider dusting them off (the theories and projects, that is) and sending them in. This is your venue, and it's here for you to take advantage of.



Committee Reports

Eric Schroeder, Chair

GOVERNMENTAL AFFAIRS

Chapter 29

The first test of the new Chapter 29 rules occurred at the last AAB meeting, in which TxDOT petitioned to discard a sizable portion of the flake debitage collection from the Anthon Site. Representatives of TxDOT's Environmental Affairs Division argued that the cost to curate the enormous amount of lithic flakes recovered from the site could range somewhere around \$300,000. The motion was discussed and it was agreed that only 25% of the flake debitage collection would require curation.

Unmarked Burial Bill

State Representative Chavez has reintroduced the unmarked burial bill into the current legislative session. The wording of current bill (HB 929) does not appear to have changed from the last session. On February 19 — the same day it was introduced — the bill was referred to the House Committee on State Cultural and Recreational Affairs. The State Archeologist, Pat Mercado-Allinger, noted that her concerns with the bill included the additional fiscal requirements that it would impose on the Texas Historical Commission if it were enacted into law. It is a curious point that Representative Chavez is not a member of the Committee to which the bill was referred. This suggests to me that unless there is some strong support for the bill, it will likely meet the same fate as it did at the last session.

Closing Note

Regardless of your political position, you should always be reminded that democracy requires participation. With this in mind, I would encourage you to contact your state and federal legislators and let them know your position not only regarding cultural resources, but also on the broader national and international issues that our state and nation face today. Most of all, let them know that you keep track of their voting record. If you don't know your

representative go to: www.capitol.state.tx.us/fyi/fyi.htm and find out.



Dana Anthony, Chair

PUBLIC EDUCATION COMMITTEE

The Public Education Committee regrets to announce, as of the date of this publication, that there are no nominees for the 2003 E. Mott Davis Award for public outreach.

I would like to remind CTA members that several teacher's journals are interested in articles on archaeology. Mary Black has provided the following information and has also offered to review short drafts before submission. You may contact Mary at msblack@mail.utexas.edu.

The Social Studies Texan, is published by the Texas Council for the Social Studies, an organization of K-12 social studies teachers. Articles of 1000 - 2000 words should be directed toward teachers. Gail Riley is the editor at griley@wf.net. **The Social Studies** is published by Heldref Foundation for social studies teachers and professors nation wide. Helen Kress is the editor and can be reached at www.heldref.org.

Mary suggests topics such as: 1) new archaeological discoveries that are important for the general public-significant sites in Texas or elsewhere, and those occupied by minority cultures; 2) Texas Archeology Awareness Month activities; 3) ways professional archaeologists can collaborate with teachers, such as speaking to classrooms or working together to create curriculum materials; 4) how archaeologists learn from primary sources such as artifacts, photos, documents, maps; 5) why classes should not dig up the schoolyard.

Photos are not required but are encouraged and jpeg is preferable though prints are acceptable.

(editor's note: at press time it appeared that there actually are potential nominees for the E. Mott Davis Award. If confirmed, they will be announced prior to the Spring Meeting.)



Karl Kibler, Chair

MEMBERSHIP COMMITTEE

As the Spring 2003 meeting of the CTA draws near the Membership Committee is evaluating student members' proposals and applications for the CTA Student Research Grant. Like last year the committee is looking forward to announcing this year's recipient at the Spring meeting.

At the Spring 2002 meeting the Membership Committee had the pleasure to announce the first recipient of a CTA Student Research Grant. Council of Texas Archeologists student member Larkin Hood of the University of Washington received the \$500 grant to pursue her study of the function and production of ceramic vessels made and used by hunter-gatherers on the upper Texas coastal plain. Her intent is to create and test a new model of ceramic vessel use and manufacture for hunter-gatherer and small-scale societies in general. Her research includes creating ceramic thin sections to examine and determine the sand sources of the ceramic tempers through petrographic analysis. Her CTA Student Research Grant funded the creation of these thin sections.

Below is the first of two reports from Ms. Hood regarding her research. In this first report she talks about the four upper Texas coastal plain sites that yielded the sherd assemblages she is examining, as well as the kinds of ceramic data collected to test her hypotheses. Ms. Hood also outlines her methods, and gives an anecdotal account of her raw data collection that took place this past summer.



Articles and Updates

This issue again presents a variety of articles touching on numerous topics. To begin with, Mark Denton of the Texas Historical Commission allowed a reprint from TxArch-L of his comments on how archeologists are presenting their methodologies within the context of reports to the THC. The Survey Standards are designed to provide a minimum level of control over survey design and methodology. However, it is realized that not all projects need to strictly conform to these standards. Be sure to review his comments so that your project can proceed as smoothly as possible. The dialog that began with Austin et al. in 26(3) continues, with Robert Cast and Tim Perttula responding to Bill Martin's comments on their response to Austin et al. in 27(1). Despite the obvious disagreements, there is room for common ground, and hopefully all parties in this matter can reach eventual accord.

The TAS of course remains an active force in Texas archeology. The CTA recently endorsed Reeda Peel's team effort towards developing a rock art recording form. This most recent update on that project presents a draft version of that form, which may soon become the standard for rock art recording in Texas. Pam Wheat has been instrumental in developing and implementing the Texas Archeology Academy, and by all accounts, the first one was a resounding success, with active participation of both professional archeologists, avocationals, and interested members of the general public.

An excellent example of the interaction between professional and avocational archaeologists is seen in the Graham/Applegate Site, a prehistoric rancheria located in the Llano Uplift. Charles Hixson, working with members of the Llano Uplift Archeological Society (LUAS), has been excavating this site for the past five years or more. Featured on texasbeyondhistory.net, this fascinating site continues to provide new insights into prehistoric life in Central Texas. An update on the most recent discoveries and interpretations is included in this issue.

And finally, Larkin Hood, a recent recipient of the CTA Student Research Grant, presents preliminary results of her doctoral research

on the sourcing of raw materials for ceramic production, as well as the potential for ceramics in further understanding social structure along the Upper Texas Coast during the past 1000 years. Once she starts generating data, she will present an update on what promises to be a valuable addition for coastal (and regional) archeologists and ceramicists in general.

Comments on any of these articles are welcome, and will be published in the next newsletter if the author desires. Consider also submitting *any* pieces that may be of interest to CTA membership.



Clarification of the Recently Adopted Survey Standards for Texas

Mark Denton, Texas Historical Commission

Since last spring when CTA adopted its "Survey Standards for Texas" and the THC accepted and implemented these standards, all surveys have been reviewed relative to these standards and things have generally gone well. However, as with the old standards our most common problem continues to be getting PIs to thoroughly explain why in some cases they felt it was not necessary for them to use or complete those standards. This is particularly true now with regard to linear surveys. Usually there is a completely legitimate geomorphological reason why the PI decided that 16 shovel tests per mile were not necessary, but they often fail to adequately explain that point in the report.

We need PIs to very specifically address in the report "...why we did not need to met the state survey standards..." The most convincing explanations usually involve an explanation of how the surveyors started out using the standards, but for X, Y, or Z reasons that level of shovel testing or backhoe work was found to not be needed, therefore, the methodology was modified to _____ (whatever). This explanation should even be repeated in the conclusions section of the report. Even if you have a great "Physical Setting" section in your report that thoroughly discusses the geomorphology

or disturbed nature of the terrain associated with your project area, please make sure you also clearly state how and why that factor or whatever factor there was that caused you to not complete or use the survey standards. Whenever, the AD reviewers have to read between the lines to put your logic together and reconstruct the possible reason(s) why you didn't met the standards, the higher the probability that we will have to 1) spend more time reviewing your project, 2) send you a letter requesting clarifications, 3) potentially reject your conclusions and recommendations, and 4) potentially delay project clearance. So, save us and yourselves some time and headaches by clearly explaining why you felt that meeting the survey standards were not necessary if you didn't follow them. Thanks!



Who's Wastin' Time: A Somewhat Warped Record, A Response to Martin's Time's a Wastin': Setting the Record Straight

Robert Cast and Timothy K. Perttula

Bill Martin (in *CTA Newsletter 27*, No. 1, pg. 23-24) tried to set the record straight about comments we made in the same newsletter about cultural resource protection and management in the Fort Worth District of the U.S. Army Corps of Engineers (*CTA Newsletter 27*, No. 1, pg. 19-23), specifically the protection and management of Caddo cultural resources at their Northeast Texas lake projects. We do not think he did set the record straight, however, and in fact he strayed from the record, while accusing us of misinformation and having a "somewhat distorted perception of reality."

We are willing to concede that we do have a "distorted perception of reality," according to Bill Martin, in that our distorted perception means that we would like to see the important archeological and cultural resources at the Northeast Texas lakes managed by the Fort Worth District actually being protected and cared for under a formal historic properties management

plan and also see the Fort Worth District and the Texas State Historic Preservation Office (SHPO) follow-up on a number of important issues that have been dodged, dug up, boondoggled and bandied about rhetorically for years. The fact is: there is no Historic Properties Management Plan for any of these Northeast Texas lakes; there is still no Programmatic Agreement for any of these Northeast Texas lakes; there is still no archeological damage assessments for any of the looted sites; the looting and damage to important archeological resources continues; there are no sites being determined eligible for the National Register of Historic Places at the lakes, but only sites determined ineligible; and there is little communication between any of the parties who say they want to properly protect and preserve these resources. Talk about time's a wastin': these same issues have been the topic of many SHPO staff meetings and staff evaluation discussions, and SHPO and Fort Worth District meetings, since at least the mid-1980s, and with much greater frequency since 1993, and ultimately all that communication has been for naught.

In regard to the Programmatic Agreement, perhaps our perception *is* a little distorted, for we hoped to see the Caddo Nation (a federally-recognized tribal government with its own constitution and by-laws) participate as *cooperative* partners in any final Programmatic Agreement that addressed the views and needs of all parties, not just the views of the Texas SHPO or the Fort Worth District. Perhaps our muddled perception was that "The State Agency FOR Historic Preservation," namely the Texas SHPO, would have some viable ideas to share with the Caddo Nation regarding the Programmatic Agreement and our concerns as a consulting party and signatory to any Programmatic Agreement.

Be warned: the word *concerns*, when used in this context, can be misconstrued, misrepresented, and even distorted, to mean we wanted to add stipulations to the Programmatic Agreement regarding cultural resources issues that were of concern to the Caddo Nation, and in our opinion, rightly belong in a Programmatic Agreement that purports to address the broad management and protection of all cultural resources at the Northeast Texas lakes. Instead, Mr. Martin (pg. 23) says that we were attempting

"to add stipulations that are unrelated to activities regulated by the National Historic Preservation Act." With advice from a number of knowledgeable sources, including the Advisory Council on Historic Preservation, and an attorney retained specifically for the purpose of reviewing documents and helping the tribe with these legal issues (who also happened to attend the initial consultation meeting), we ask Mr. Martin, "What stipulations would those be? And, how are they unrelated?"

Finally, at the risk of wasting time once again, in January 2003, it was the Caddo Nation (not the Texas SHPO) that asked the Fort Worth District once again about any progress on the Programmatic Agreement in the last year. Since the Texas SHPO and the Fort Worth District had ignored any of the stipulations and substantive concerns we wanted to include in the Programmatic Agreement at the October 2001 meeting that Bill Martin is so at pains to set the record straight on, the Caddo Nation redrafted the agreement and sent it to the Fort Worth District for review. We were told then that the revised agreement would be forwarded to the Fort Worth District's legal counsel; we're sure the Texas SHPO was forwarded a copy for their review. However, in our most recent correspondence with the Fort Worth District in January 2003, we were told that the Fort Worth District legal counsel is still reviewing both *their* agreement and the Caddo Nation's revised Programmatic Agreement. As both these agreements have been in the hands of the Fort Worth District for well over a year, we ask you, Mr. Martin: **who's wastin' time?**

All consulting parties are apparently in agreement that it is important to protect and manage cultural and archeological resources at the Northeast Texas Fort Worth District lakes. Furthermore, all the parties also seem to agree that a Programmatic Agreement is a key step (if not the first of many key steps) in actually having the Fort Worth District implement effective protection and management actions at the lakes. Thus, we can only continue to question the priorities of the Fort Worth District and the Texas SHPO in this regard, and wonder why a workable agreement document that addresses the concerns of all the consulting parties has yet to be developed to protect and manage Caddo archeological and cultural resources.

Rock Art Form

Reeda Peel

Texas Rock Art Database Director

As work progresses on the Database Project, we are finding two very challenging tasks. Technology is changing so rapidly, we have to make sure the technology we choose to carry out the project is flexible enough to adapt technological advances. The second challenging task is crucial to the long term success of the project. It is to develop a rock art recording form that will furnish all the information necessary to produce a searchable database and at the same time not be too burdensome to carry/use. We also have to keep in mind that the form will be used by people with varying degrees of rock art recording experience. Since it is likely that a large part of the rock art recordings in the future will be done by professional archeologists, the TRADP team believes it is very important to have input from the professional community, and we believe CTA is the ideal place to ask for that input.

The best way to get input is to have individuals use the form in the recording of an actual rock art site, and then have a question/answer/critique session. Since we can't do that, the Database Project team will bring a replica of a rock art site to the CTA meeting (4' x 8' made of foam...looks real). The form will be introduced at the meeting, and attendees will be asked to use the form to record the replica rock art. This will provide us an opportunity to test the form with the professional community, and enable us to efficiently gather feedback. With your help we hope to produce a manageable and useful tool for both ongoing and future research.



Texas Archeology Academy Teaches Survey and Limited Testing

Pam Wheat, TAS Executive Director

New spring training in archeological reconnaissance — Texas Archeology Academy — sponsored by TAS began with an overflow crowd: 51 paying participants and 20 volunteer mentors. The Academy was held in Houston February 22 & 23 and March 1.

Each Academy is three days long: two full days in the classroom and one-day in the field to use the new knowledge gained. The manual for the Academy was written by Harry Shafer and included 5 sections: (1) Introduction to Archeological Reconnaissance, (2) Site Survey, (3) Testing, (4) Laboratory Analysis, and (5) Writing the Report. Shafer was the lead instructor with a Power Point presentation using the archeology of the Gulf Coast to illustrate method and theory. On Saturday during the lunch hour, Frank Binetti did a flint knapping demonstration. On Sunday, the Brazoria Militia related their living history program to the field day at San Felipe de Austin.

Marianne Marek, principal investigator, Greg Sundborg, assistant, and Bob Shelby, TAS director for Region 5, led the field day. Archeological investigations included test units on private land that was included in the original township of San Felipe. The objective was to determine the extent of habitation. Each crew tested a city block then went to a lab where they processed their artifacts to understand the complete cycle. Marek will write a report of the work.

On March 15, 16 & 22 an Academy will be taught at the Witte Museum, San Antonio, with fieldwork on the Seco Creek property of Dr. Tom Hester where Jason Weston will serve as principal investigator. The second session of the Academy for 2003 promises to be as popular as the first. Mike Durack, TAS director for Region 12, led an active local committee in setting up the workshop and field day.

The last 2003 Academy will be held in Fort Worth at Tarrant County College May 3, 4 & 10. Johnny Byers will be principal investigator and Jim Blanton, TAS director for Region 3, chaired the local arrangements committee. See www.txarch.org for more information.

Horizontal Stratigraphy at the Graham/Applegate Site (41LL419)

Charles Hixson

After almost five years of excavations at Graham/Applegate (41LL419) by the Llano Uplift Archeological Society, a more complex picture of the site's aboriginal occupations has emerged than was initially presumed. When the project began in the summer of 1998, the available evidence — surface Scallorn points and preforms — pointed to a single component Austin phase site. The initial strategy was to excavate large contiguous blocks of units that could reveal patterning of artifacts and features reflecting a single or at least very limited number of activities. The first year excavations seemed to confirm the single component presumption although a small percentage of Archaic points were also recovered. Numerous features were uncovered by the early block excavations, most notably a house floor made up of a stone ring surrounding a large circular basin filled with granite cobbles and boulders (Figure 1). This feature belongs to Type 4 of the Lintz et al. (1995) classification of structural remains from central and west Texas. Over the next four years, five additional Type 4 house floors were located and excavated as well as a burned rock midden not visible on the surface but found by a randomly placed test unit. In addition to the larger features, over 40 clusters of burned granite cobbles were found. To date, 570 square meters or 6.3% of the .9 hectare site has been excavated. The area of coverage rises to 20% for the Austin phase portion of the site. As more areas of the site were uncovered and more diagnostic artifacts located, it became apparent that more than one cultural group visited the site.

The archeological deposits at 41LL419 are not stratified. They are mostly contained in the upper 25 cm of a gravelly soil matrix typical of the well drained upland soils that develop on weathered granite bedrock. Objects lying on the surface of such soils become buried relatively rapidly by pedoturbation, a fact that no doubt has led to the large number of intact and well preserved features found at Graham/Applegate. The depth of an artifact or feature at this site is not a reliable indicator of relative

age since many other factors are involved, including the weight and size of the object and the local soil conditions. Only in a single case where two features were actually superimposed — a small stone hearth five cm above a house floor — does the law of superposition obviously apply (Figure 2).

While there is no discernible vertical stratigraphy at 41LL419, a kind of horizontal stratigraphy has become evident where the separate components are defined by their areal extent instead of their depth or stratum location. Fortunately, these horizontal components overlapped only partially, and the artifacts and small features from earlier occupations of the site were mostly undisturbed by later groups. Apart from diagnostic artifacts, these horizontal components were also identified by radio-carbon dating of hearth charcoal. From these dates, it also became apparent that the hearths with the most charcoal had the latest dates, providing a third dating method — the amount of charcoal/carbon staining in hearth features — to give a sense of seriation of these features.

Using the methods of identification noted above, we can see four separate periods of occupation or components of the Graham/Applegate site (Figure 3). These occupations took place within a one hectare area between two dry tributaries of an unnamed intermittent creek, itself a tributary of the Llano River. The first significant period of occupation occurred during the Archaic II period. It was the most extensive of the four, spanning the entire northern half of 41LL419 but leaving behind a more diffuse artifact distribution than later occupations. This component was identified by the presence of widely scattered Ensor, Frio, and Fairland points. The eastern two thirds of the site contained only Archaic II material but it is mixed with that of later occupations in the western third. A large, flat circular stone hearth 90 cm in diameter can be attributed to this period, along with several small piles of

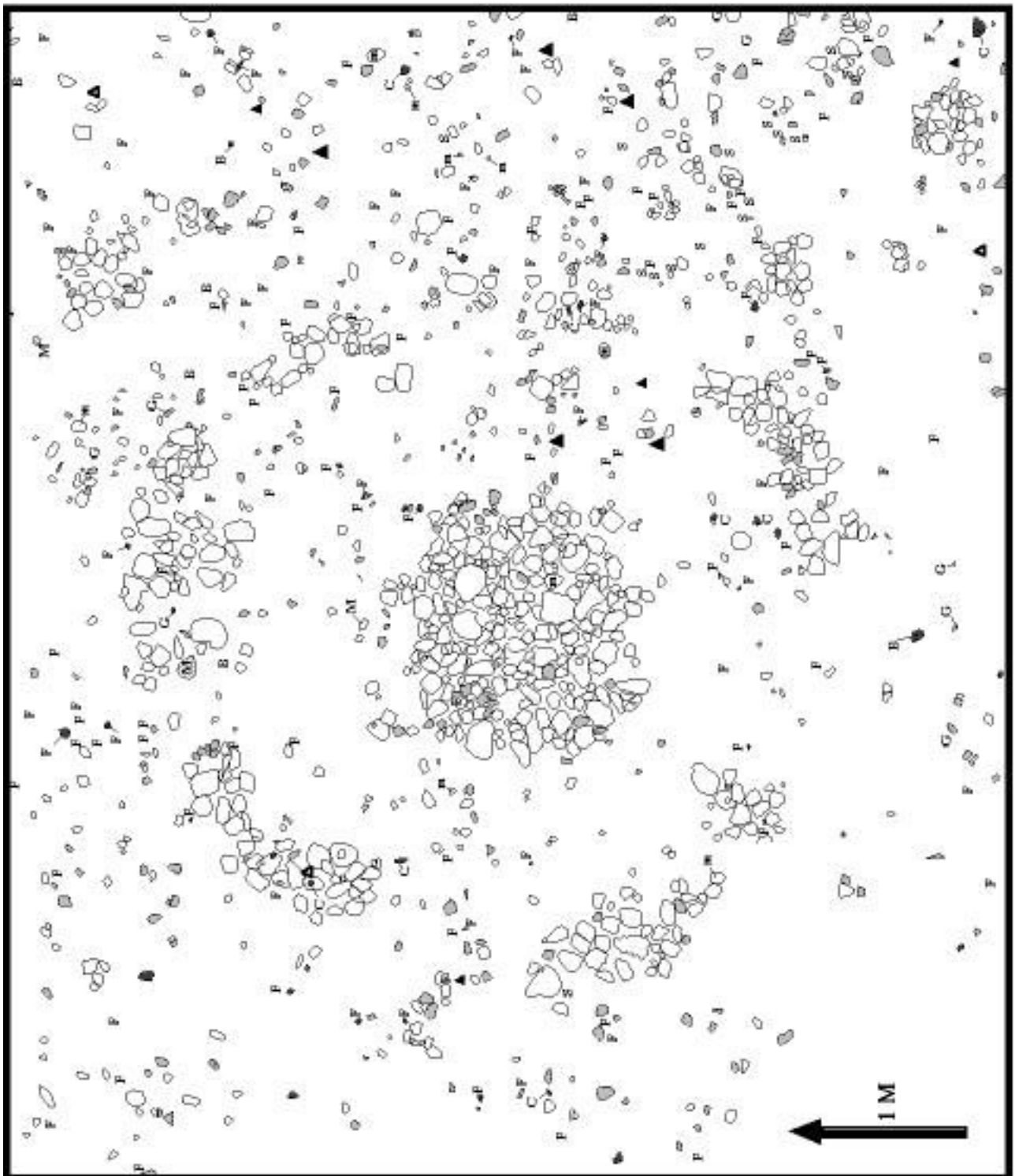


FIGURE 1. HOUSE 1 FLOOR AT 41LL419



Figure 2. House 3 partially excavated showing Hearth F22 5 cm above central pavement.

rocks. Since the rocks in these piles are relatively small, they conceivably could have used in stone boiling. The gravel quarry southeast of 41LL419 will eventually extend northwards, destroying much of the Archaic II portions of the site.

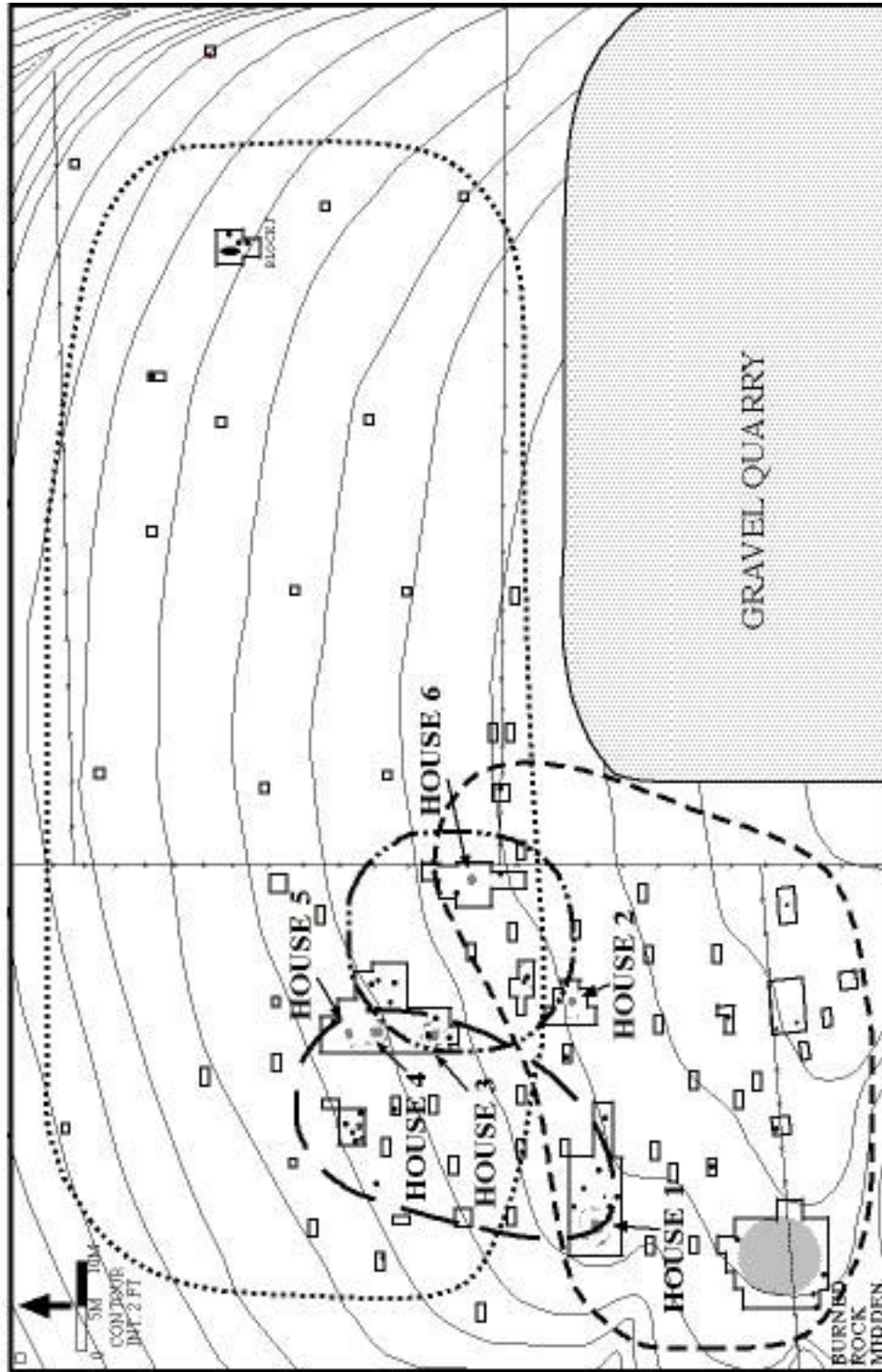
A more restricted but concentrated occupation of the site occurred in the later Archaic II when Darl points were in use. The activities of this cultural group were confined to the western part of the site and possibly involved the first use of earth ovens at the site as indicated by a radiocarbon date of 2σ Cal AD 590 \pm 60 (Beta-170868) from live oak charcoal. This sample was recovered from fairly deep in the outer edge of the fire-cracked ring of granite rocks, suggesting an early episode of use. Once earth ovens became established in the southwestern part of the site, later Austin phase occupations tended to concentrate near it.

A concentration of Darl points was found immediately to the northwest of (and overlapping a bit of) House 1, a later Austin phase structure, leading to the initial confusion that both Scallorn and Darl points were used by its occupants. Three house floors (Houses 3, 4, and 5) on the northwest edge of the site may date to this period, although they might also belong to the Archaic II period or even the early part of the Austin phase. These structures have not been assigned to any particular cultural group but they predate the mid to later Austin phase. Charcoal from a hearth above the House 3 floor produced a radiocarbon date of AD 1100 \pm 90 (2 σ , Beta-145423). No charcoal has been found in the central hearths of the three houses or in the small outdoor fireplaces, and the few diagnostic artifacts from around the floors are from widely different periods.

The most substantial occupations of 41LL419 took place during the Austin phase, as indicated by the large numbers of Scallorn points and six radiocarbon dates which span the time period between AD 1000 and 1350. Austin phase material is confined to the western one third of the site, the part of the site known as the "rancheria" where all six of the known houses are located. While the site may have been visited at different times throughout this span of time, they seem to fall into an early and late grouping. The first visitation happened around AD 1000 (based on radiocarbon dates from features

associated with House 1) and was confined to the southwestern part of the site. Three houses (House 1, 2, and 6) probably were built during one of these early Austin phase visits. They are more or less equally spaced along roughly the same contour elevation. Construction details are similar, including the size of the rocks used in the central hearths. The other houses (Houses 3, 4, and 5) may also have been built at this time but are set somewhat apart from the other three — and while they conform to Type 4 structural remains, they differ from the other three houses in the use of smaller stones to create a level paved area in the center of the floor that may or may not have functioned as hearth. Outside the house floors are small circular to oval concentrations of burned granite rocks or fireplaces similar to those associated with Darl points. The early Austin phase hearths contain little or no carbon staining. A radiocarbon date and the fact that no Austin phase debris was found on the midden surface suggests that the earth oven area continued to be used by these people.

Later Austin phase camping occurred to the north of these houses, as suggested by a series of stone hearths or fireplaces still containing considerable charcoal yielding radiocarbon dates between AD 1200 and 1350. Besides Scallorn points, several points with projecting barbs and short, slightly expanding stemmed points ("Eddy") were also recovered from this area. The stratigraphic position of Eddy points at the Smith Shelter in Travis county (Suhm 1957), suggest that this style appeared late in Austin phase times. While the radiocarbon dates overlap the time period of the Toyah phase, no artifacts of that cultural group have been found at Graham/Applegate. Round stone hearths were used during these late occupations that are slightly larger on average from the small hearths of earlier periods at Graham/Applegate. An unusual double hearth consisting of two edge-to-edge circular rock clusters, one flat with little carbon staining and the other forming a shallow basin filled with very dark, carbon-stained soil. A small, but deep rock-lined pit with no staining may also belong to this late Austin phase occupation was found. The rocks for these features may have been robbed from the floors of the earlier Austin phase Houses 2 and 6, both of which have incomplete outer stone rings.



- LATE ARCHAIC II (ENSOR)
- EARLY AUSTIN PHASE
- LATE ARCHAIC II (DARL)
- · - · - LATE AUSTIN PHASE
- ★ STONE CLUSTER

FEATURE 3. HORIZONTAL COMPONENTS AT GRAHAM/APPLEGATE, 41LL419

Modeling Hunter-Gatherer Ceramic Production and Use: A Test Case From the Upper Texas Coastal Plain

Report of Research Activities: Part 1

Larkin Hood, University of Washington

In March of 2002, I was awarded a Council of Texas Archeologists Student Research grant. My dissertation research investigates the function and production of ceramic vessels made and used by hunter-gatherers on the upper Texas coastal plain. My intent is to contribute to our archaeological knowledge of the upper Texas coast, and to create and test a new model of ceramic vessel use and manufacture for hunter-gatherer and small-scale societies in general. I will test my model by collecting data from the previously excavated sherds from four upper Texas coastal plain sites: Mitchell Ridge (41GV66), Little Bethlehem (41AU38), Honeycomb (41LB4), and The Crawford Site (41PK69 — pending permission from the Caddo Nation) (Figure 1). I will collect four kinds of data to test my hypotheses: morphological characteristics of sherds, petrographic sources of mineral inclusions in pottery pastes, organic residue signatures, and thermoluminescence dates. In the following brief report, I give a

thumbnail sketch of my research, outline my methods, and give an anecdotal account of my raw data collection that took place this past summer.

Why Ceramics?

Historically, archaeologists have made assumptions about the manufacture and use of ceramic vessels. Even today, in the face of a growing body of data indicating the contrary, archaeologists assume that the presence of ceramic vessels in the archaeological record indicates specific social and economic contexts, such as food production and storage (e.g., Rice 1987). Archaeologists have also recently developed theoretical models for the use of ceramic vessels as items used by individuals to acquire social and political prestige (e.g., Hayden 1995, Rice 1996). Yet current research continues to yield examples of manufacture and use of ceramic vessels by non-food producing,

— (41LL 419 continued)

One problem with horizontal stratigraphy is the reliance on projectile points and radiocarbon-dated features to identify the extent of the separate components. In reality, the occupation areas were certainly much larger than those enclosed by the component boundaries drawn in Figure 3 and the overlaps greater as well. We have to contend with the fact that the patterning of artifacts over these overlapping areas represent the survivable debris from different activities conducted by different cultural groups. This probably explains why the distribution of debitage and tools over the house areas does not conform well to the outlines the house floors - all the house areas are partially mixed with material from earlier and/or later periods. Still, the available evidence points

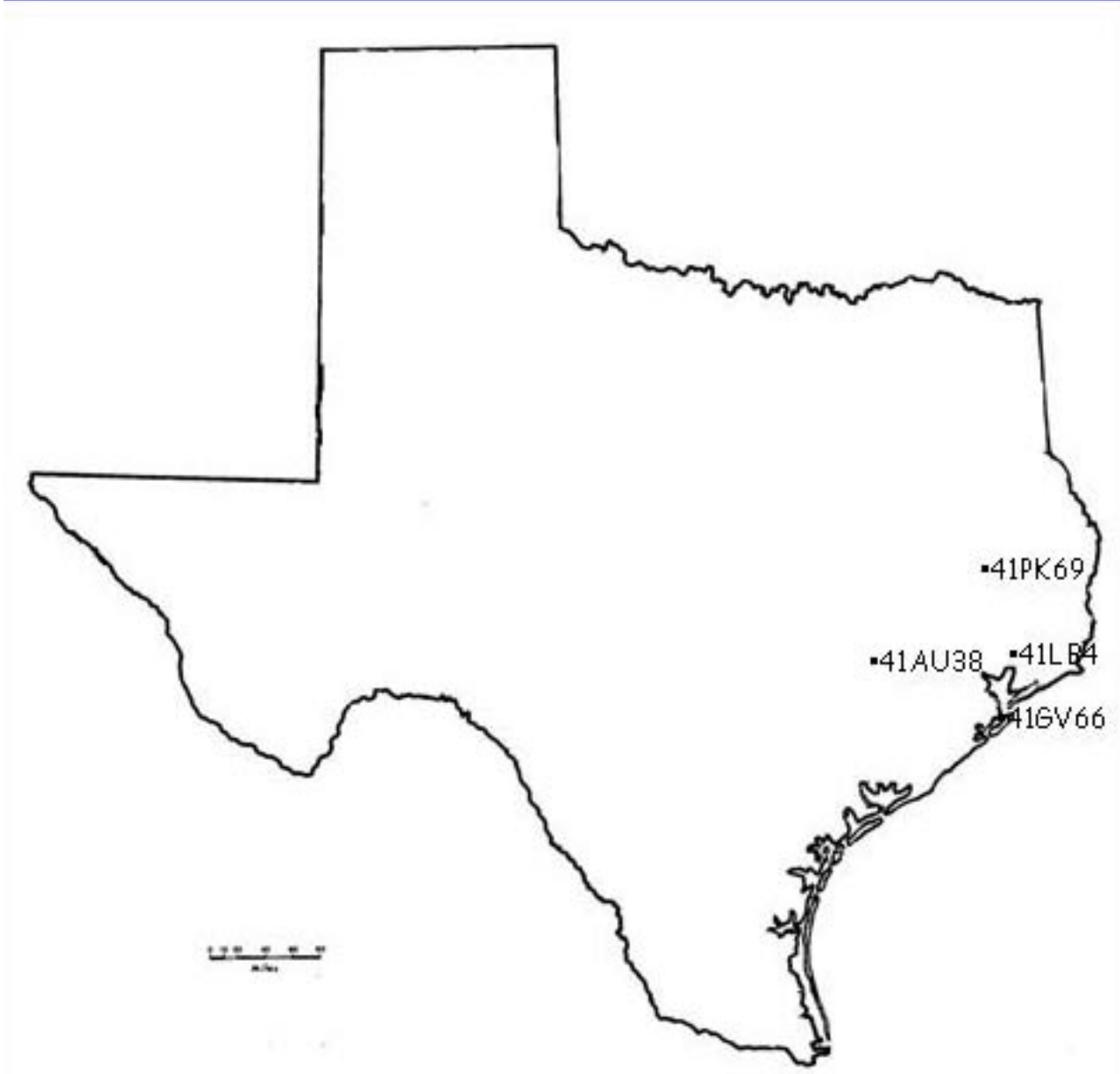
to large areas of the earlier Archaic II (Ensor) component and the earliest Austin phase occupation being unmixed.

References Cited

Lintz, C., A. Treece, and F. Oglesby
1995 The Early Archaic Structure at the Turkey Bend Ranch Site (41CC112). Concho County. In *Advances in Texas Archeology*, Volume 1, edited by J.E. Bruseth and T.K. Perttula, pg. 155-186. Cultural Resource Management Report 5. Texas Historical Commission, Austin.

Suhm, D. A.
1957 Excavations at the Smith Rockshelter, Travis County, Texas. *Texas Journal of Science*, 9(1):26-58.

Location of Sites



non-food storing, socially egalitarian hunter-gatherer societies (e.g., P. Arnold 1999, Eerkens et al. 2002, Hoopes 1995, Hoopes and Barnett 1995, Sassaman 1993). Researchers have recognized the limitations of standard models of food production, storage, and prestige in understanding pottery manufacture and use, particularly in small-scale hunter-gatherer societies, and have made a call to replace these old assumptions with new data (e.g., P. Arnold 1999, Eerkens et al. 2002). Since ceramic vessels appear in a variety of societies, archaeologists need to understand their function and the contexts of their production in order to understand how to interpret the presence of pottery in these societies. Without further research on the manufacture and use of pottery in small-scale societies, we have no alternative but to fall upon existing models which are not useful in explaining ceramic vessel production and use in these types of societies. Using these standard models may cause us to attribute a type of social organization or change in subsistence economy that simply is not present. The research described here is designed to start filling this gap in archaeological knowledge. This research will provide examples of how ceramic vessel data can contribute to our understanding of the economic organization of hunter-gatherer societies.

Modeling Hunter-gatherer Ceramic Production and Use

The archaeology of the upper Texas gulf coastal plain has yielded thousands of utilitarian wares dating from 2000 BP through historic contact. If upper Texas coastal plain wares had uses other than items for food production, storage, and/or prestige behavior, then the morphological, mineralogical, and organic residue data collected from these sherds should meet the following empirical expectations:

Hypothesis 1: Ceramic vessels on the upper Texas coastal plain were used for processing a wide variety of wild resources.

In order for hypothesis 1 to be plausible, the organic residue data should indicate that a variety of resources were processed in the pots. While determining if a single vessel contained more than one food is problematic, I expect a variety of food residues to occur across each

pottery assemblage. Organic residues should also reflect locally available resources at a given site. For example, I would not expect to see large amounts of large mammal residue in the Mitchell Ridge assemblage. None of the assemblages from the selected sites should contain residues from maize or other cultigens.

Hypothesis 2: Ceramic vessels on the upper Texas coastal plain were not used for storage.

The empirical expectations for this hypothesis are based upon the assumptions that storage vessels are fairly large and thick-walled with constricted orifices. Storage vessels can be large in size because they do not need to be moved often. Thick walls are useful for storage vessels because they protect the pot from the effects of mechanical shock, whereas cooking pots should have thin walls in order to better conduct heat (Rice 1987). Orifices of storage vessels are often constricted in order to restrict access to their contents (Rice 1987). I also assume that vessels used for dry storage should not contain food residues or any evidence of use over direct heat. Thus, I expect that upper Texas coastal plain sherds to indicate vessels of various sizes with thin walls and open orifices. Organic food residues should be present, as well as sooting, thermal cracks (spalling), and/or carbon deposits associated with use over direct heat (Braun 1983, Skibo 1992).

Hypothesis 3: Ceramic vessels on the upper Texas coastal plain were not used as prestige items.

Hypothesis 3 can be investigated using the following assumptions: prestige wares exhibit high frequencies of substantial labor investment (Hayden 1995). Thus prestige wares would have evidence of careful construction and surface treatment, as well as decoration. Utilitarian vessels are expected to have little surface treatment or decoration. Petrographic data should indicate that the wares were locally made, and there should be no evidence of non-local geologic sources or decorative styles. Finally, utilitarian ware assemblages are expected to exhibit a variety of shapes and sizes, rather than just a focus on small vessels in forms that can be easily packed and transported, such as bowls (Rice 1987).

Methods — Petrographic Analysis

This research requires four sets of methods:

- 1) An initial, non-destructive morphological analysis.
- 2) Petrographic analysis.
- 3) Residue analysis using a gas chromatograph and a mass spectrometer.
- 4) Thermoluminescence dating of sherds.

In this report, I focus on the petrographic analysis, as this is the aspect of the research supported by the CTA award. Petrographic analysis is a powerful method for pottery sourcing studies. Determining geological provenance of pottery using mineralogical data continues to be done decades after Anna Shepard's ground-breaking work on sourcing pottery pastes using their mineral inclusions (e.g., Shepard 1965, Dickinson 1998, O'Malley 1981, Porter and Szuter 1978). Unlike chemical constituent analyses, petrographic analysis allows the researcher to tie the minerals in a pot's paste to a specific geologic source on the landscape (Stoltman 2001). Such a sourcing study is possible in the upper Texas coastal plain because the rivers that drain into the Gulf of Mexico have distinct sand compositions derived from the different source rocks they flow through (Hsu 1960). These sands are deposited on the upper Texas coastal plain as a series of ocean-trending wedges of sediment that parallel the coastline. The main geologic formations in this area are composed of highly plastic clays and clayey sands (Bureau of Economic Geology 1982). These deposits are thought to be the naturally-tempered clays prehistoric people used to make pottery (Aten 1983). Thus, determining the geologic sources of the sand-sized particles in the sherd pastes will allow me to determine if the vessels were locally manufactured.

In order to accurately assign the sherds from these four sites to a geologic provenance, I first sampled sands in the local area. I took samples from geologic formations adjacent to the sites in the summer of 2002, as well as portions of the Brazos and Trinity Rivers which flow through distinct source rocks. The next step in my research is to assess the variability in mineralogical composition and frequency of

common minerals such as quartz, feldspars, and lithic grains in these samples in order to determine how much they differ from one another on a microscale. I am currently working with a geologist trained in sedimentary petrology to increase my skill in identifying mineral types derived from sedimentary rock sources similar to the ones of the upper Texas coastal plain. The final step in my petrographic analysis will be to compare thin sections of sherds with grain mounts of the local sand sources. This will be done using a petrographic microscope owned by the Department of Anthropology at the University of Washington using a ribbon-counting method (Stoltman 2001).

Selecting Sites and Collecting Samples

This past summer I traveled to, from, and all around Texas using travel funds awarded by Sigma Xi Grants-In-Aid-Of-Research and the University of Washington Department of Anthropology. My first stop was Austin, where I spent a month at the Texas Archaeological Research Laboratory using records and collections to make my final selection of sites. I consulted site reports and sherd collections for information on the amount and quality of sherds. I selected sites based on the quality and quantity of their collections, the reliability of their dates and the quality of their recovery. I wanted to make sure that I selected sites that had overlapping dates, so it would be easier for me to make comparisons between them. I also wanted to include sherd collections from a variety of site types, e.g., big, small, shell middens, non-shell bearing sites, etc. I selected four sites: Mitchell Ridge, Little Bethlehem, Honeycomb, and Crawford, all of which have overlapping periods of occupation between AD 1100 and contact. I copied records showing their exact location, obtained permission to collect sediment samples from the sites, and began the process of requesting to conduct destructive research on portions of the collections.

For the next month I visited the sites, locating them and taking sediment samples, often with the help of volunteers. THC Stewards Sheldon Kindall, Beverly Mendenhall, and Dick Gregg visited Mitchell Ridge with me, braving mosquitoes and peacocks (!) to obtain 200 grams of sediment from the site (see Figure 2, taken by Dick). Sheldon and Dick took part in the 1970's



Figure 2.



Figure 3.



Figure 4.

excavations at Mitchell Ridge and were very helpful in relocating the site and recalling what the cultural matrix looked like. Local landowner and geologist Denman Shelton helped me collect samples from the Beaumont Formation in the environs of Little Bethlehem, snapping this photo of me trying to keep a straight face after an unplanned (but refreshing) dip in the lower Brazos (Figure 3). Jan Stokes and Richard Long of the US Army Corps of Engineers ferried me to Honeycomb and adjacent areas to collect samples and Tiffany Terneny kindly took a turn with the bucket auger to bore through the thick clay of the site (see Figure 4). The last few weeks of my summer were spent sampling from geologic formations containing the source rocks for the sands of the coast. I traveled along the Brazos and Trinity Rivers, sampling at places where they intersected distinctive sources. Then, my truck loaded with data (and a few packs of Shiner), I headed back to Seattle.

The Next Step

I am currently in Seattle, sorting and labeling sherds. Soon I will begin the process of identifying the minerals in the sand-size particles from the sediments I have collected, after using my CTA Student Research Grant to have thin section grain mounts professionally prepared...stay tuned for my results! In the meantime, I would be interested in hearing about any comments or suggestions for my research. I can be reached via email at: Lnapua@u.washington.edu

Acknowledgments

In addition to the people and organizations mentioned in the text, I would like to thank Laura Nightengale of the Texas Archaeological Research Laboratory and Pat Clabaugh of Texas A&M Department of Anthropology for helping me locate and view collections. Nancy Kenmotsu of the Texas Department of Transportation helped me locate copies of reports for the Crawford Site. Mark Denton of the Texas Historical Commission gave guidelines on taking sediment samples from Mitchell Ridge. I thank C. Reid Ferring of the University of North Texas for being so generous with his time and knowledge on petrographic sourcing and the lithology of the Trinity River Basin. Thanks also to Eric Roach and Family, as

well as all of my "Texas" friends — I couldn't have had such a wonderfully productive field season without you.

Bibliography

- Arnold, P. J. (1999) "Tecomates, Residential Mobility, And Early Formative Occupation In Coastal Lowland Mesoamerica." In Pottery And People: A Dynamic Interaction, eds. J.M. Skibo and G.M. Feinman, pp. 157-170. Smithsonian Press
- Aten, L. E. (1983). Indians Of The Upper Texas Coast. New York, Academic Press.
- Braun, D. P. (1983). Pots As Tools. Archaeological Hammers And Theories. J. A. Moore and A. S. Keene. New York, Academic Press: 107-134.
- Bureau of Economic Geology, U.T.A. (1982). Geologic Atlas of Texas, Houston Sheet. Austin, University of Texas Bureau of Economic Geology.
- Dickinson, W. R. (1998). "Petrographic Temper Provinces Of Prehistoric Pottery In Oceania." Records Of The Australian Museum 50: 263-276.
- Eerkens, J. H. Neff, and M.D. Glascock (2002). "Ceramic Production Among Small-Scale and Mobile Hunters and Gatherers: A Case Study From the Southwestern Great Basin." Journal Of Anthropological Archaeology 21: 200-229.
- Hayden, B. (1995). The Emergence of Prestige Technologies and Pottery. The Emergence of Pottery: Technology And Innovation in Ancient Societies. W. K. Barnett and J. W. Hoopes. Washington, D.C., Smithsonian Institution Press: 257-265.
- Hoopes, J. W. (1995). Interaction in Hunter and Gathering Societies as a Context for the Emergence of Pottery in the Central American Isthmus. The Emergence of Pottery: Technology and Innovation in Ancient Societies. W. K. Barnett and J. W. Hoopes. Washington, D.C., Smithsonian Institution Press: 185-198.
- Hoopes, J. W. and W. K. Barnett (1995). The Shape of Early Pottery Studies. The Emergence of Pottery: Technology and Innovation in Ancient Societies. W. K. Barnett and J. W. Hoopes. Washington, D.C., Smithsonian Institution Press: 1-7.
- Hsu, K. J. (1960). "Texture And Mineralogy Of The Recent Sands Of The Gulf Coast." Journal Of Sedimentary Petrology 30(3): 380-403.
- O'Malley, N. (1981). "A Petrographic Analysis Of Late Woodland Ceramics From The

Announcements

Curtis D. Tunnell Memorial Grant Fund

Pat Mercado-Allinger – Texas Historical Commission

The Texas Historical Commission (THC) is now accepting applications for the newly created Curtis D. Tunnell Memorial Grant fund. Grants of up to \$3,000 will be awarded in the areas of archeology, ethnography and oral history.

The fund honors the achievements of the late Curtis D. Tunnell during his tenure as executive director of the THC and as Texas State Archeologist. Tunnell was Texas' first official archeologist, a job he held from 1965 to 1981. Tunnell worked as head of the THC for 18 years before retiring in 1999. He was awarded posthumously the THC's Archeologist of the Year award in 2001.

For more information about grant applications call the THC Archeology Division at 512/463-6096 or write the THC at P.O. Box 12276, Austin, TX, 78711 (Attn: Curtis D. Tunnell Memorial Grant Fund). Grant applications are due by April 1, 2003. For Application see pages 24-26.

Photos

The Council of Texas Archeologists continues to solicit images of CTA functions, digital or otherwise, for the CTA Archives. Please contact David O. Brown or Doug Boyd if you have any media of interest.

Admendment to CTA Bylaws

Pursuant to Article XII of the CTA Bylaws, this serves as notice to the membership that Article VI.1 of the CTA Bylaws will be proposed for amendment at the Spring meeting. At issue is whether it is necessary to notify members by mail to the last known address 15 days prior to any CTA meeting. Article XII states that two-thirds of members present an voting must approve any amendments to the Bylaws before such amendments are incorporated.

The Bylaws are available on the CTA Web page.

Corrections

In the previous CTA Newsletter 27(1), the consulting firm Archeological & Environmental Consultants, LLC, was incorrectly referenced on two occasions. On page 5, right column, lines 5-6, the name was given as Archaeological and Environmental Consultants, Inc., and on page 7, right column, lines 18-19, the name was given as Archaeological and Environmental Consultants. The editor apologizes for any confusion this may have caused.

I would also like to take this occasion to apologize for somehow allowing Eric Schroeder's last committee report to fall into a digital crack and disappear. If I am overlooking other submissions, or am not addressing specific issues, or if anyone has ideas for the newsletter, please feel free to contact me at you convenience.

– (Continued from page 22)

- Sperry Site, Jackson County, Missouri." Plains Anthropologist: 241-249.
- Porter, J. W. and C. R. Szuter (1978). "Thin-Section Analysis of Schlemmer Site Ceramics." Midcontinental Journal Of Archaeology 3(3): 3-14.
- Rice, P. M. (1987). Pottery Analysis: A Sourcebook. Chicago, University of Chicago Press.
- (1996). "Recent Ceramic Analysis: 1: Function, Style, and Origins." Journal of Archaeological Research 4(2).
- Sassaman, K. E. (1993). Early Pottery in the Southeast: Tradition and Innovation in Cooking Technology. Tuscaloosa, University

- of Alabama Press.
- Shepard, A. O. (1965). Ceramics for the Archaeologist. Washington, D.C., Carnegie Institution.
- Skibo, J. M. (1992). Pottery Function: A Use-Alteration Perspective. New York, Plenum Press.
- Stoltman, J. B. (2001). The Role Of Petrography In The Study Of Archaeological Ceramics. Earth Sciences And Archaeology. P. Goldberg, V. T. Holliday and C. R. Ferring. New York, Kluwer Academic/Plenum: 297-326.



CURTIS D. TUNNELL MEMORIAL FUND GRANT APPLICATION

FRIENDS OF THE TEXAS HISTORICAL COMMISSION

(PLEASE TYPE OR PRINT NEATLY IN INK)

I. APPLICANT INFORMATION

Name _____

Address _____

City _____ **State** _____ **Zip Code** _____

Applicant status (check one):

- 501(c)(3) organization (attach copy of IRS notice of 501(c)(3) status)
- Public institution
- Private

Social Security or Tax ID # _____

Partner organizations (names, addresses and contact information) _____

II. PROJECT INFORMATION

Type of project

- Archeology
- Ethnography
- Oral history

Project title _____

Project description [include project justification and immediacy information, project timeline, and end product(s); attach additional pages as needed]



III. PERSONNEL/QUALIFICATIONS

Key project personnel (name / address / phone number / e-mail address) **and role in the proposed project.**

_ Resume(s) included.

IV. **ESTIMATED BUDGET.** Provide an estimated budget on the enclosed form. Note that cash or in-kind match is encouraged but not required. Also, up to 20% of the grant award may be withheld, pending completion of the project.

_ Estimated budget included.

V. **DEMONSTRATED SUPPORT.** Please attach any letter(s) of support for the project to this application.

_ Letter(s) of support included.

VI. **PROJECT REQUIREMENTS.** A summary of project results and / or copy of the end product must be submitted to the Texas Historical Commission upon completion of the project.

VII. **REQUIRED SIGNATURE.** Application will be returned if not signed.

I agree to all policies and requirements of the Friends of the Texas Historical Commission, Inc. relating to the Curtis D. Tunnell Memorial Fund if awarded a grant.

Project Manager Signature

Date



GRANT APPLICATIONS MUST BE RECEIVED BY 5:00 P.M. ON APRIL 1, 2003

SEND FOUR (4) COPIES OF THE PROPOSAL TO:

Texas Historical Commission
 ATTN: Curtis D. Tunnell Memorial Fund
 P.O. Box 12276
 Austin, Texas 78711-2276
 (Physical Address: 108 West 16th Street, Austin, Texas 78701)

CURTIS D. TUNNELL MEMORIAL FUND GRANT APPLICATION
 FRIENDS OF THE TEXAS HISTORICAL COMMISSION

BUDGET

Please identify and provide cost information for each item pertaining to your project using the following form. If more space is needed, attach any additional pages needed using the same format.

PROJECT ITEM/
 DESCRIPTION
 PROJECT COSTS

Cash match*	In-kind match*	Requested funds	Subtotals
-------------	----------------	-----------------	-----------

Subtotals =

*Recommended but not required.

TOTAL PROJECT COST = \$_____

TOTAL FUNDS REQUESTED = \$_____

MINIMUM AMOUNT OF GRANT FUNDS ACCEPTABLE = \$_____

_ OR, will accept any amount of grant funds available.

LIST OF COMMITTEES

The following committees are not necessarily active, but are listed at some location within the web site or within recent newsletters. Information on the present officers is also provided.

COMMITTEES	History	Doug Boyd dboyd@paiarch.com
Auditing		
	Alan Skinner arcdigs@aol.com	Ethics and Standards NA
Contractor's List	Jorge Garcia-Herreros jherrerros@bheen Meg Cruse mecruse@pbsj.com cta-contractor@c-tx-arch.org	Laboratory and Curation Alliance NA
Governmental Affairs	Eric Schroeder paleoman@academicplanet.com	OFFICERS
Multicultural Relations	Alston Thoms a-thoms@tamu.edu	President Clell Bond clbond@pbsj.com
Nominating	Ron Ralph ronralph@texas.net	Past-President David Brown david.brown@mail.utexas.edu
Public Education	Dana Anthony dananthony@swtexas.net	President-elect NA
Accreditation and Review	Pat Clabaugh pclabaugh@tamu.edu	Secretary-Treasurer Missi Green mgreen@geo-marine.com cta-members@c-tx-arch.org
Membership	Karl Kibler kkibler@paiarch.com	Newsletter Editor Andy Malof amalof@lcra.org
Web Page / Internet Communications	Sue Linder-Linsley slinder@mail.smu.edu	
Survey Standards	Marianne Marek marianne@nstci.com	
AntiLooting	Todd MacMakin Todd.McMakin@tpwd.state.tx.us	
TLCA	NA	
Curation Task Force	Karen Gardner kgardner@paiarch.com	



CTA Newsletter

Andy Malof
 Editor
 c/o LCRA
 PO Box 220
 Austin, Texas 78767
cta-members@c-tx-arch.org
cta-contractor@c-tx-arch.org

Sue Linder-Linsley, RPA
 Web Committee, Chair
 c/o Department of Anthropology
 Southern Methodist University
 Dallas, Texas 75275-0336

TO:

**Council of Texas Archeologists
 Membership and
 Renewal Form**

Return to:
 Melissa Green, CTA Secretary-Treasurer
 c/o Geo-Marine, Inc.
 550 East 15th Street
 Plano, TX 75074

- Address correction only (see below).
- I wish to join or renew my membership in CTA.
 (membership is based on the calendar year Jan-Dec)
 - Contractor's List \$100.00
 - Professional (annual income more than \$20,000 per year) 25.00
 - Professional (annual income less than \$20,000 per year)
 - Student (annual income more than \$20,000 per year) 25.00
 - Student (annual income less than \$20,000 per year) 15.00
 - Institution/Library (receive *CTA Newsletter* only, no voting privileges) 25.00
 - I would like to purchase a copy of the *CTA Guidelines* 7.50

Total amount remitted to CTA \$ _____

Name (please print): _____
 Company/Institution: _____
 Address: _____
 City/State/Zip: _____
 Phone: _____ FAX: _____ e-mail: _____